

Faire des croisements et récolter des semences F1

BMS 12.0 Tutorials

Summary

This tutorial describes how to: record and import crosses into a nursery, advance crosses to create an F1 harvest list, and record and reserve the F1 seed inventory.

[Record Crosses](#)

[Export Template](#)

[Record Crosses](#)

[Import Crosses](#)

[Generate F1 Germplasm List](#)

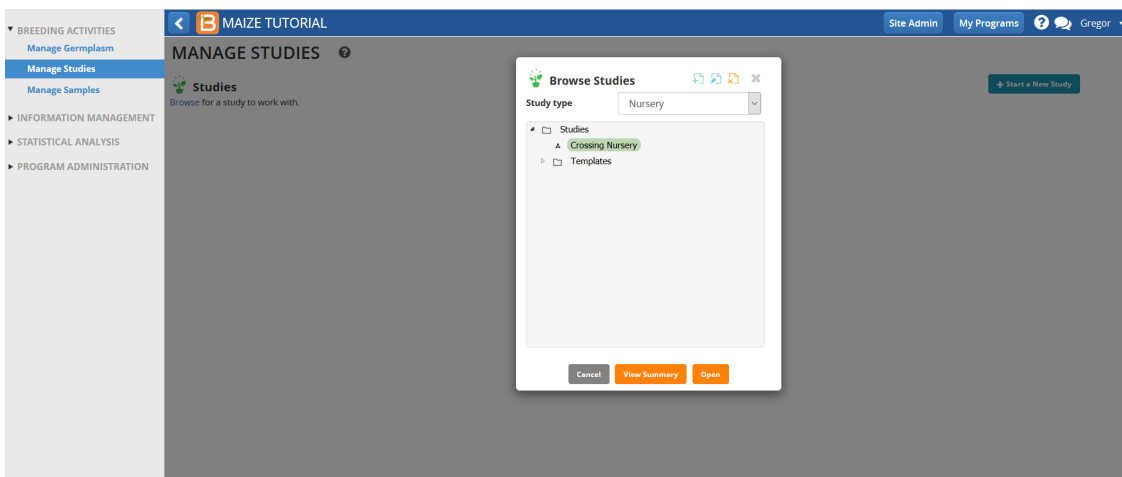
[Harvest F1 Seed](#)

[Review Germplasm Details](#)

[Reserve F1 Seed for F1 Nursery](#)

Record Crosses

- In the Manage Studies Tool, **Browse** and open the Crossing Nursery.



Export Template

- Select **Export Crossing Template** from the Crossing Options tool in the Actions Menu (.xls).

MAIZE TUTORIAL

MANAGE STUDIES

Crossing Nursery

Settings | Germplasm & Checks | Environments | Experimental Design | Measurements

Define Measurement Details

TRAITS

Measurements

Select Environment: 1 - Default Breeding Location | Records per page: 100 | Showing 1 to 50 of 50 entries

ENTRY_TYPE	GID	DESIGNATION	ENTRY_NO	PLOT_NO	FIELDMAP COLUMN	FIELDMAP RANGE
Test entry	40	BMS1	1	1	1	1
Test entry	41	BMS2	2	2	2	1
Test entry	42	BMS3	3	3	3	1
Test entry	43	BMS4	4	4	4	1
Test entry	44	BMS5	5	5	5	1
Test entry	45	BMS6	6	6	5	2
Test entry	46	BMS7	7	7	4	2
Test entry	47	BMS8	8	8	3	2
Test entry	48	BMS9	9	9	2	2
Test entry	49	BMS10	10	10	1	2
Test entry	50	BMS11	11	11	1	3
Test entry	51	BMS12	12	12	2	3

- Open the exported Crossing Template from your computer. The crossing template has four work sheets. The observation sheet contains 2 columns, FEMALE_PLOT and MALE_PLOT that require data entry for importing crosses. Other details are optional. For more information see [Manual: Crossing Template](#).

	A	B	C	D	E	F	G
1	FEMALE PLOT	MALE STUDY	MALE PLOT	BREEDING METHOD	CROSSING DATE	NOTES	
2							
3							
4							
5							
6							
7							
8							
9							
10							
11							
12							
13							
14							
15							
16							
17							
18							
19							
20							
21							
22							
23							
24							

Observation

Record Crosses

- We would be making 25 crosses with the crossing nursery list prepared earlier. The fourth work sheet of the template (Study list) has the details of the entries and the plot numbers in column B.

FEMALE STUDY									
A	B	C	D	E	F	G	H	I	J
FEMALE STUDY	FEMALE PLOT	ENTRY TYPE	GID	MGID	DESIGNATION	CROSS	FIELDMAP COLUMN	FIELDMAP RANGE	PLOT ID
1 Crossing Nursery		1 Test Entry	40	40	BMS1	-	1		J11RPa16M4hn
2 Crossing Nursery		2 Test Entry	41	41	BMS2	-	2		J11RPaKUOnME
3 Crossing Nursery		3 Test Entry	42	42	BMS3	-	3		J11RPaJPIgAou
4 Crossing Nursery		4 Test Entry	43	43	BMS4	-	4		J11RPaD6SO4VTs
5 Crossing Nursery		5 Test Entry	44	44	BMS5	-	5		J11RPa7dzu3KA6
6 Crossing Nursery		6 Test Entry	45	45	BMS6	-	6		J11RPaRWY1NDJv
7 Crossing Nursery		7 Test Entry	46	46	BMS7	-	7		J11RPaLQJxUa
8 Crossing Nursery		8 Test Entry	47	47	BMS8	-	8		J11RPa6tSFX
9 Crossing Nursery		9 Test Entry	48	48	BMS9	-	9		J11RPaY3o88kBa
10 Crossing Nursery		10 Test Entry	49	49	BMS10	-	10		J11RPa5l893iy
11 Crossing Nursery		11 Test Entry	50	50	BMS11	-	11		J11RPaQuhpGpGi
12 Crossing Nursery		12 Test Entry	51	51	BMS12	-	12		J11RPaWz1TE4P
13 Crossing Nursery		13 Test Entry	52	52	BMS13	-	13		J11RPaOxdamaAA
14 Crossing Nursery		14 Test Entry	53	53	BMS14	-	14		J11RPahtSD5Gpm
15 Crossing Nursery		15 Test Entry	54	54	BMS15	-	15		J11RPaBq8dmIQ
16 Crossing Nursery		16 Test Entry	55	55	BMS16	-	16		J11RPa3lQKok
17 Crossing Nursery		17 Test Entry	56	56	BMS17	-	17		J11RPaOaxVXgDe
18 Crossing Nursery		18 Test Entry	57	57	BMS18	-	18		J11RPaWGNKV0V
19 Crossing Nursery		19 Test Entry	58	58	BMS19	-	19		J11RPaZg5JYXj
20 Crossing Nursery		20 Test Entry	59	59	BMS20	-	20		J11RPaOF2uH0M8
21 Crossing Nursery		21 Test Entry	60	60	BMS21	-	21		J11RPaJPFKVs
22 Crossing Nursery		22 Test Entry	61	61	BMS22	-	22		J11RPaQIZFLp
23 Crossing Nursery		23 Test Entry	62	62	BMS23	-	23		J11RPa2B4eduw
24 Crossing Nursery		24 Test Entry	63	63	BMS24	-	24		J11RPaBbkYpwLd
25 Crossing Nursery		25 Test Entry	64	64	BMS25	-	25		J11RPaK2Sveps
26 Crossing Nursery		26 Test Entry	65	65	BMS26	-	26		J11RPaYgguLU8
27 Crossing Nursery		27 Test Entry	66	66	BMS27	-	27		J11RPaYxdEcMQ2
28 Crossing Nursery		28 Test Entry	67	67	BMS28	-	28		J11RPaYJphWZ
29 Crossing Nursery		29 Test Entry	68	68	BMS29	-	29		J11RPaYy4Vhw9w
30 Crossing Nursery		30 Test Entry	69	69	BMS30	-	30		J11RPaNzr8LQU
31 Crossing Nursery		31 Test Entry	70	70	BMS31	-	31		J11RPaNjESDmnK
32 Crossing Nursery		32 Test Entry	71	71	BMS32	-	32		J11RPa02RnYf
33 Crossing Nursery		33 Test Entry	72	72	BMS33	-	33		J11RPaTgqTWP
34 Crossing Nursery		34 Test Entry	73	73	BMS34	-	34		J11RPaRnIZY2
35 Crossing Nursery		35 Test Entry	74	74	BMS35	-	35		J11RPaUHVmiWX
36 Crossing Nursery		36 Test Entry	75	75	BMS36	-	36		J11RPaCkuoVriXi
37 Crossing Nursery		37 Test Entry	76	76	BMS37	-	37		J11RPaBair9DTR
38 Crossing Nursery		38 Test Entry	77	77	BMS38	-	38		J11RPaL7mEW1a
39 Crossing Nursery		39 Test Entry	78	78	BMS39	-	39		J11RPaJyOuckY
40 Crossing Nursery		40 Test Entry	79	79	BMS40	-	40		J11RPaH6lNpa25
41 Crossing Nursery		41 Test Entry	80	80	BMS41	-	41		J11RPa3mgu6L0q
42 Crossing Nursery		42 Test Entry	81	81	BMS42	-	42		J11RPaC9lntC9
43 Crossing Nursery		43 Test Entry	82	82	BMS43	-	43		J11RPaOBUCs1sm

- Enter 1 through 25 in the FEMALE PLOT column. Enter 26 through 50 in the MALE PLOT column. Save the changes. In this example, single crosses will be made between Entry 1 as female and Entry 26 as male etc.

A	B	C	D	E	F
FEMALE PLOT	MALE STUDY	MALE PLOT	BREEDING METHOD	CROSSING DATE	NOTES
1		26			
2		27			
3		28			
4		29			
5		30			
6		31			
7		32			
8		33			
9		34			
10		35			
11		36			
12		37			
13		38			
14		39			
15		40			
16		41			
17		42			
18		43			
19		44			
20		45			
21		46			
22		47			
23		48			

Import Crosses

- Select **Import Crosses** from the Crossing Options tool in the Actions Menu.

MANAGE STUDIES
Crossing Nursery

Settings | Germplasm & Checks | Environments | Experimental Design | Measurements

Define Measurement Details

TRAITS

Measurements

Select Environment: 1 - Default Breeding Location | Records per page: 100 | Showing 1 to 50 of 50 entries

ENTRY_TYPE	GID	DESIGNATION	ENTRY_NO	PLOT_NO	FIELDMAP COLUMN	FIELDMAP RANGE
Test entry	40	BMS1	1	1	1	1
Test entry	41	BMS2	2	2	2	1
Test entry	42	BMS3	3	3	3	1
Test entry	43	BMS4	4	4	4	1
Test entry	44	BMS5	5	5	5	1
Test entry	45	BMS6	6	6	5	2
Test entry	46	BMS7	7	7	4	2
Test entry	47	BMS8	8	8	3	2
Test entry	48	BMS9	9	9	2	2
Test entry	49	BMS10	10	10	1	2
Test entry	50	BMS11	11	11	1	3
Test entry	51	BMS12	12	12	2	3

- Browse for and upload the crossing record saved on the crossing template (.xls). Select **Continue**.

Import Crosses

CHOOSE IMPORT FILE

Choose the file you would like to import.

Browse | Cancel | Continue

- Specify Breeding Method. Select **Use the parental status** to assume the default single cross breeding method.

Specify Breeding Method

By default, the breeding method for new crosses will be based on the status of their parental lines. As an alternative, you can select a method to use for all crosses.

☐ Use the breeding methods specified in the import file

☒ Use parental status

☐ Select a method to use for all crosses:

Dropdown menu: [All methods] [Generative methods] [Manage Methods]

☐ Show only favorite methods

Back | Continue

- **Continue.**

Specify Naming and Harvest Details

Choose how you would like the names to be generated for the new crosses. You can use the automatic name generation rules for your program, or specify a name format

Naming

☒ Use automatic name generation | ☐ Specify name format

Harvest Details

Estimated harvest date: 2018 | Month

Harvest location: Default Breeding Location - (DBL)

☒ Breeding locations | ☐ All locations types

☐ Show only favorite locations | Manage Locations

Back | Continue

- Select **Use automatic name generation** and specify a harvest location. We have used Default Breeding Location as Harvest Location but you can use Manage Locations Icon to designate location/s specific to your program.
- **Continue.**
- Review pending crosses and select **Finish.**

BREEDING ACTIVITIES

Manage Germplasm

Manage Studies

Manage Samples

INFORMATION MANAGEMENT

STATISTICAL ANALYSIS

PROGRAM ADMINISTRATION

MAIZE TUTORIAL

Site Admin

My Programs

Gregor

MANAGE STUDIES

Review Crosses

100

Showing 1 to 25 of 25 entries

#	CROSS	DUPLICATE	FEMALE PEDIGREE	FEMALE PARENT	MALE PEDIGREE	MALE PARENT	BREEDING METHOD NAME	SEED_SOURCE
1	BMS1/BMS26		-	BMS1	-	BMS26	Single cross	Crossing Nursery:Defau
2	BMS2/BMS27		-	BMS2	-	BMS27	Single cross	Crossing Nursery:Defau
3	BMS3/BMS28		-	BMS3	-	BMS28	Single cross	Crossing Nursery:Defau
4	BMS4/BMS29		-	BMS4	-	BMS29	Single cross	Crossing Nursery:Defau
5	BMS5/BMS30		-	BMS5	-	BMS30	Single cross	Crossing Nursery:Defau
6	BMS6/BMS31		-	BMS6	-	BMS31	Single cross	Crossing Nursery:Defau
7	BMS7/BMS32		-	BMS7	-	BMS32	Single cross	Crossing Nursery:Defau
8	BMS8/BMS33		-	BMS8	-	BMS33	Single cross	Crossing Nursery:Defau
9	BMS9/BMS34		-	BMS9	-	BMS34	Single cross	Crossing Nursery:Defau
10	BMS10/BMS35		-	BMS10	-	BMS35	Single cross	Crossing Nursery:Defau
11	BMS11/BMS36		-	BMS11	-	BMS36	Single cross	Crossing Nursery:Defau
12	BMS12/BMS37		-	BMS12	-	BMS37	Single cross	Crossing Nursery:Defau
13	BMS13/BMS38		-	BMS13	-	BMS38	Single cross	Crossing Nursery:Defau

Back

Finish

Generate F1 Germplasm List

- Name and describe the F1 Germplasm list. **Save.**

Saving the F1 Germplasm list opens a new tab in the Crossing Nursery named Imported Crosses.

BREEDING ACTIVITIES

Manage Germplasm

Manage Studies

Manage Samples

INFORMATION MANAGEMENT

STATISTICAL ANALYSIS

PROGRAM ADMINISTRATION

MAIZE TUTORIAL

Site Admin

My Programs

Gregor

MANAGE STUDIES

Crossing Nursery

Settings

Germplasm & Checks

Environments

Experimental Design

Measurements

Imported Crosses: [F1 Germplasm]

Define Measurement Details

TRAITS

Measurements

Save List As

List Location

Crop lists

Program lists

2018

Nursery Checks

Commercial Checks 2018

Parental List 2018

Trial Germplasm 2018

List Details

List Name:

F1 Germplasm

List Owner:

Gregor Mendel

List Description:

F1 list derived by importing a crossing file

List Type:

Imported F1 list

List Date:

2018-08-24

Notes:

Cancel

Save

Harvest F1 Seed

The F1 germplasm list represents the expected offspring from this nursery, independent of actual harvest details. Unsuccessful crosses will result in F1 germplasm with zero harvest amount.

BREEDING ACTIVITIES

Manage Germplasm

Manage Studies

Manage Samples

INFORMATION MANAGEMENT

STATISTICAL ANALYSIS

PROGRAM ADMINISTRATION

MAIZE TUTORIAL

Site Admin

My Programs

Gregor

MANAGE STUDIES

Crossing Nursery

Settings

Germplasm & Checks

Environments

Experimental Design

Measurements

Imported Crosses: [F1 Germplasm]

Define Measurement Details

TRAITS

Measurements

Notes:

Cross List: F1 Germplasm

Total Entries: 25 Selected: 0

ENTRY_NO	DESIGNATION	CROSS	FEMALE PARENT	FGID	MALE PARENT	MGID	SEED_SOURCE	GROUP ID	DUPLICATE
1	IB1	BMS1/BMS26	BMS1	40	BMS26	65	Crossing Nursery:Default Breeding Location:201808.1;/Crossing Nursery:Default Breeding Location:201808.26;	.	
2	IB2	BMS2/BMS27	BMS2	41	BMS27	66	Crossing Nursery:Default Breeding Location:201808.2;/Crossing Nursery:Default Breeding Location:201808.27;	.	
3	IB3	BMS3/BMS28	BMS3	42	BMS28	67	Crossing Nursery:Default Breeding Location:201808.3;/Crossing Nursery:Default Breeding Location:201808.28;	.	
4	IB4	BMS4/BMS29	BMS4	43	BMS29	68	Crossing Nursery:Default Breeding Location:201808.4;/Crossing Nursery:Default Breeding Location:201808.29;	.	
5	IB5	BMS5/BMS30	BMS5	44	BMS30	69	Crossing Nursery:Default Breeding Location:201808.5;/Crossing Nursery:Default Breeding Location:201808.30;	.	
6	IB6	BMS6/BMS31	BMS6	45	BMS31	70	Crossing Nursery:Default Breeding Location:201808.6;/Crossing Nursery:Default Breeding Location:201808.31;	.	
7	IB7	BMS7/BMS32	BMS7	46	BMS32	71	Crossing Nursery:Default Breeding Location:201808.7;/Crossing Nursery:Default Breeding Location:201808.32;	.	

- Select **Generate Stock List** from Cross List Actions menu to record the amount of seed harvested.

MANAGE STUDIES

Crossing Nursery

BASIC DETAILS

Settings | Germplasm & Checks | Environments | Experimental Design | Measurements | Imported Crosses: [F1 Germplasm]

Cross List: **F1 Germplasm**
Total Entries: 25 | Selected: 0

Notes:

View List Details
Create List Actions
Generate Stock List
Save Parent List

ENTRY_NO	DESIGNATION	CROSS	FEMALE PARENT	FGID	MALE PARENT	MGID	GID	SEED_SOURCE
1	IB1	BMS1/BMS26	BMS1	40	BMS26	65	90	Crossing Nursery:Default Breeding Location:201808.1;/Crossing Nursery:Default Breeding Location:201808.26;
2	IB2	BMS2/BMS27	BMS2	41	BMS27	66	91	Crossing Nursery:Default Breeding Location:201808.2;/Crossing Nursery:Default Breeding Location:201808.27;
3	IB3	BMS3/BMS28	BMS3	42	BMS28	67	92	Crossing Nursery:Default Breeding Location:201808.3;/Crossing Nursery:Default Breeding Location:201808.28;
4	IB4	BMS4/BMS29	BMS4	43	BMS29	68	93	Crossing Nursery:Default Breeding Location:201808.4;/Crossing Nursery:Default Breeding Location:201808.29;

MANAGE STUDIES

Crossing Nursery

BASIC DETAILS

Settings | Germplasm & Checks | Environments | Experimental Design | Measurements | Imported Crosses: [F1 Germplasm]

Cross List: **F1 Germplasm**
Total Entries: 25 | Selected: 0

Notes:

View List Details
Create List Actions
Generate Stock List
Save Parent List

ENTRY_NO	DESIGNATION	CROSS	FEMALE PARENT	FGID	MALE PARENT	MGID	GID	SEED_SOURCE
1	IB1	BMS1/BMS26	BMS1	40	BMS26	65	90	Crossing Nursery:Default Breeding Location:201808.1;/Crossing Nursery:Default Breeding Location:201808.26;
2	IB2	BMS2/BMS27	BMS2	41	BMS27	66	91	Crossing Nursery:Default Breeding Location:201808.2;/Crossing Nursery:Default Breeding Location:201808.27;
3	IB3	BMS3/BMS28	BMS3	42	BMS28	67	92	Crossing Nursery:Default Breeding Location:201808.3;/Crossing Nursery:Default Breeding Location:201808.28;

- **Continue.**
- Select the check box at the top of the table to highlight all 25 entries. Select **Update Inventory** from the Stock List Actions menu.

MANAGE STUDIES

Crossing Nursery

BASIC DETAILS

Settings | Germplasm & Checks | Environments | Experimental Design | Measurements | Imported Crosses: [F1 Germplasm] | **Stock List: [F1 Germplasm]**

Stock List: **F1 Germplasm**
Total Entries: 25 | Selected: 25

Notes:

View List Details
Stock List Actions

ENTRY_NO	DESIGNATION	CROSS	GID	StockID	SEED_SOURCE	GROUP ID	DUPLICATE	BULK WITH	BULK COMPL?	LOCATION	AMOUNT
<input checked="" type="checkbox"/>	1	IB1	BMS1/BMS26	90	SID-1	-	-	-	-	-	0.0
<input checked="" type="checkbox"/>	2	IB2	BMS2/BMS27	91	SID-2	-	-	-	-	-	0.0
<input checked="" type="checkbox"/>	3	IB3	BMS3/BMS28	92	SID-3	-	-	-	-	-	0.0
<input checked="" type="checkbox"/>	4	IB4	BMS4/BMS29	93	SID-4	-	-	-	-	-	0.0
<input checked="" type="checkbox"/>	5	IB5	BMS5/BMS30	94	SID-5	-	-	-	-	-	0.0

Bulk Duplicates and Reciprocals
Create Labels
Export Inventory File
Import Inventory File
Update Inventory

- Choose a seed storage location (Default Seed Store) and g -Weighed as the units of measurement. Enter 500 for the amount of seed harvested and **Save**.

MANAGE STUDIES

Crossing Nursery

BASIC DETAILS

Settings | Germplasm & Checks | Environments | Experimental Design | Measurements | Imported Crosses: [F1 Germplasm] | **Stock List: [F1 Germplasm]**

Stock List: **F1 Germplasm**
Total Entries: 25 | Selected: 25

Notes:

View List Details
Stock List Actions

ENTRY_NO	DESIGNATION	CROSS	GID	StockID	SEED_SOURCE	GROUP ID	DUPLICATE	BULK WITH	BULK COMPL?	LOCATION	AMOUNT
<input checked="" type="checkbox"/>	1	IB1	BMS1/BMS26	90	SID-1	-	-	-	-	-	0.0
<input checked="" type="checkbox"/>	2	IB2	BMS2/BMS27	91	SID-2	-	-	-	-	-	0.0
<input checked="" type="checkbox"/>	3	IB3	BMS3/BMS28	92	SID-3	-	-	-	-	-	0.0
<input checked="" type="checkbox"/>	4	IB4	BMS4/BMS29	93	SID-4	-	-	-	-	-	0.0
<input checked="" type="checkbox"/>	5	IB5	BMS5/BMS30	94	SID-5	-	-	-	-	-	0.0

Update Inventory

* Indicates a mandatory field

LOCATION

Choose a storage location to apply to selected entries: * Default Seed Store - (DSS) Manage Locations

Showing:

☒ Seed storage locations
☐ All locations types
☐ Include favorite locations only

SCALE AND AMOUNT

Choose the scale to apply to selected entries: * g - Weighed

Amount: * 500

COMMENTS

Comments: For F1 Nursery

Cancel Save

Review Germplasm Details

500 grams of seed has now been applied as available seed to all 25 F1 germplasm entries.

- Select IB1 to review germplasm details.

BREEDING ACTIVITIES

Manage Germplasm

Manage Studies

Manage Samples

INFORMATION MANAGEMENT

STATISTICAL ANALYSIS

PROGRAM ADMINISTRATION

MAIZE TUTORIAL

Site Admin

My Programs

Gregor

Crossing Nursery

Save

Return to Manage Studies

Actions

Settings

Germplasm & Checks

Environments

Experimental Design

Measurements

Imported Crosses: [F1 Germplasm]

Stock List:[F1 Germplasm]

Notes:

View List Details

Stock List Actions

Stock List: F1 Germplasm

Total Entries: 25 Selected: 0

100 Showing 1 to 25 of 25 entries

ENTRY_NO	DESIGNATION	CROSS	GID	StockID	SEED_SOURCE	GROUP ID	DUPLICATE	BULK WITH	BULK COMPL?	LOCATION	AMOUNT	UNITS	COMMENT
<input type="checkbox"/>	1	IB1	BMS1/BMS26	90	SID4-1	Crossing Nursery:Default Breeding Location:201808-1./Crossing Nursery:Default Breeding Location:201808-26:	-			Default Seed Store	500.0	SEED_AMOUNT_g	For F1 Nursery
<input type="checkbox"/>	2	IB2	BMS2/BMS27	91	SID4-2	Crossing Nursery:Default Breeding Location:201808-2./Crossing Nursery:Default Breeding Location:201808-27:	-			Default Seed Store	500.0	SEED_AMOUNT_g	For F1 Nursery
<input type="checkbox"/>	3	IB3	BMS3/BMS28	92	SID4-3	Crossing Nursery:Default Breeding Location:201808-3./Crossing Nursery:Default Breeding Location:201808-28:	-			Default Seed Store	500.0	SEED_AMOUNT_g	For F1 Nursery
<input type="checkbox"/>	4	IB4	BMS4/BMS29	93	SID4-4	Crossing Nursery:Default Breeding Location:201808-4./Crossing Nursery:Default Breeding Location:201808-29:	-			Default Seed Store	500.0	SEED_AMOUNT_g	For F1 Nursery

Harvesting the exact same amount of seed from each cross may not be realistic. To record individual amounts, you have the option to exporting the stock list (.xls) and enter individual values per entry.

Notice that the correct breeding method, Single cross, was applied in the creation of this F1 germplasm.

- Select View Pedigree Graph from Pedigree Tree.

BREEDING ACTIVITIES

Manage Germplasm

Manage Studies

Manage Samples

INFORMATION MANAGEMENT

STATISTICAL ANALYSIS

PROGRAM ADMINISTRATION

MAIZE TUTORIAL

Site Admin

My Programs

Gregor

Crossing Nursery

Save

Return to Manage Studies

Actions

Settings

Germplasm & Checks

Environments

Experimental Design

Measurements

Imported Crosses: [F1 Germplasm]

Stock List:[F1 Germplasm]

Notes:

View List Details

Stock List Actions

Stock List: F1 Germplasm

Total Entries: 25 Selected: 1

100 Showing 1 to 25 of 25 entries

ENTRY_NO	DESIGNATION	CROSS	GID	StockID	SEED_SOURCE	GROUP ID	DUPLICATE	BULK WITH	BULK COMPL?	LOCATION	AMOUNT	UNITS	COMMENT
<input checked="" type="checkbox"/>	1	IB1	BMS1/BMS26	90	SID4-1	Crossing Nursery:Default Breeding Location:201808-1./Crossing Nursery:Default Breeding Location:201808-26:	-			Default Seed Store	500.0	SEED_AMOUNT_g	For F1 Nursery
<input type="checkbox"/>	2	IB2	BMS2/BMS27	91	SID4-2	Crossing Nursery:Default Breeding Location:201808-2./Crossing Nursery:Default Breeding Location:201808-27:	-			Default Seed Store	500.0	SEED_AMOUNT_g	For F1 Nursery
<input type="checkbox"/>	3	IB3	BMS3/BMS28	92	SID4-3	Crossing Nursery:Default Breeding Location:201808-3./Crossing Nursery:Default Breeding Location:201808-28:	-			Default Seed Store	500.0	SEED_AMOUNT_g	For F1 Nursery

Germplasm Details: IB1 (GID: 90)

BASIC DETAILS

Preferred Name: IB1

Creation Date: 20180824

GID: 90

Creation Method: Single cross

Location: Default Breeding Location

Reference:

☐ Grouped Line

Group Id (MGID): 0

ATTRIBUTES

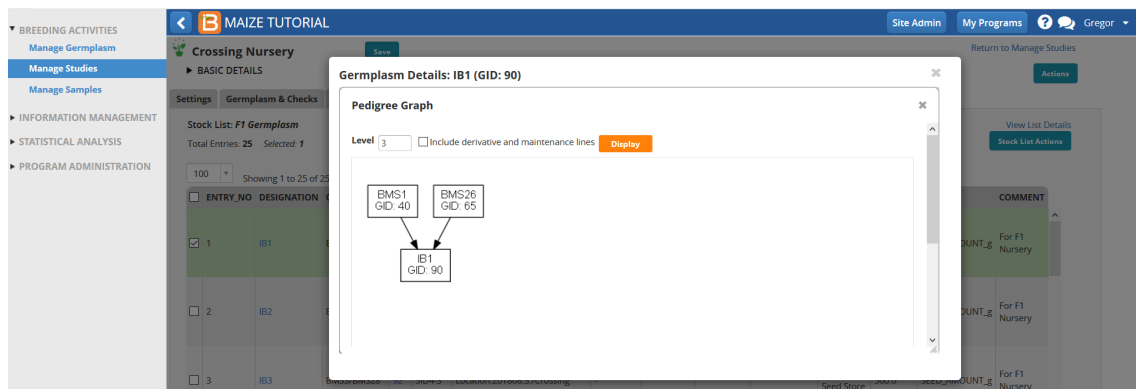
PEDIGREE TREE

NAMES

INVENTORY INFORMATION

LISTS

The pedigree graph shows that the F1 entry IB1 has been derived from a cross between BMS1 & BMS26.



MANAGE GERmplasm

View Lists View Germplasm

List Details
Browse or search for a list to work with.

F1 Germplasm

List entries
Total Entries: 25 Selected: 0

#	DESIGNATION	CROSS	NAME	OWNER	DESCRIPTION	TYPE	# OF ENTRIES
1	IB1	BMS1/BMS2	Crop lists				
2	IB2	BMS2/BMS3	Program lists				
3	IB3	BMS3/BMS4	2018		2018	LIST FOLDER	
4	IB4	BMS4/BMS5	F1 Germplasm	Gregor Mendel	F1 list derived by import...	Imported F1 list	25
5	IB5	BMS5/BMS6	Nursery Checks	Gregor Mendel	For Nurseries	GERMPLASM LISTS	3
6	IB6	BMS6/BMS7	Commercial Checks 201	Admin Admin	example germplasm	GERMPLASM LISTS	7
7	IB7	BMS7/BMS8	Parental List 2018	Admin Admin	example germplasm	GERMPLASM LISTS	50
8	IB8	BMS8/BMS9	Trial Germplasm 2018	Admin Admin	example data	GERMPLASM LISTS	32

- Select **Inventory View** from the Actions menu.

MANAGE GERmplasm

View Lists View Germplasm

List Details
Browse or search for a list to work with.

F1 Germplasm

List entries
Total Entries: 25 Selected: 0

#	DESIGNATION	CROSS	LOTS	AVAILABLE	ENTRY_CODE	GID	GROUP ID	STOCKID	SEED_SOURCE
1	IB1	BMS1/BMS26	1	500.0 g	1	90	-	SID4-1	Crossing Nursery:Default Breeding Loca
2	IB2	BMS2/BMS27	1	500.0 g	2	91	-	SID4-2	Crossing Nursery:Default Breeding Location:2018082:/Crossing Nursery:Default Bre
3	IB3	BMS3/BMS28	1	500.0 g	3	92	-	SID4-3	Crossing Nursery:Default Breeding Location:2018083:/Crossing Nursery:Default Bre
4	IB4	BMS4/BMS29	1	500.0 g	4	93	-	SID4-4	Crossing Nursery:Default Breeding Location:2018084:/Crossing Nursery:Default Bre
5	IB5	BMS5/BMS30	1	500.0 g	5	94	-	SID4-5	Crossing Nursery:Default Breeding Location:2018085:/Crossing Nursery:Default Bre

Inventory view
List editing options
Export list
Coding and Grouping Options

- Highlight all entries and select **Reserve Inventory** from the Inventory Management Option in the Actions menu.

MANAGE GERmplasm

View Lists View Germplasm

List Details
Browse or search for a list to work with.

F1 Germplasm

Inventory
Total Lots: 25 Selected: 25

#	DESIGNATION	LOCATION	AVAILABLE	RESERVATION	TOTAL WITHDRAWALS	COMMENT	STOCKID
1	IB1	Default Seed Store	500.0g	0.0g	0.0g		SID4-1
2	IB2	Default Seed Store	500.0g	0.0g	0.0g		SID4-2
3	IB3	Default Seed Store	500.0g	0.0g	0.0g		SID4-3
4	IB4	Default Seed Store	500.0g	0.0g	0.0g		SID4-4
5	IB5	Default Seed Store	500.0g	0.0g	0.0g		SID4-5
6	IB6	Default Seed Store	500.0g	0.0g	0.0g		SID4-6
7	IB7	Default Seed Store	500.0g	0.0g	0.0g		SID4-7

Reserve Inventory
Save changes
Cancel Seed Reservations
Close lots

- Enter 200 in SEED_AMOUNT_g. **Finish**.

MANAGE GERmplasm

View Lists View Germplasm

List Details
Browse or search for a list to work with.

F1 Germplasm

Inventory
Total Lots: 25 Selected: 25

Seed Preparation

Specify the amount of seed you would like to prepare for each selected lot. (25 selected)

Amount to Reserve ☐ Specify amount in SEED_AMOUNT_g 200 ☐ Prepare all available seed

Notes
For F1 Nursery

☐ Commit seed withdrawal on saving

Cancel Finish

- **Save changes** from the Inventory Management Option in the Actions menu..

BREEDING ACTIVITIES

MAIZE TUTORIAL

Site AdminMy ProgramsGregor

Manage Germplasm

Manage Studies

Manage Samples

INFORMATION MANAGEMENT

STATISTICAL ANALYSIS

PROGRAM ADMINISTRATION

MANAGE GERmplasm

View ListsView Germplasm

List Details

Browse or search for a list to work with.

Show List Builder

F1 Germplasm

Inventory

Total Lots: 25Selected: 25

	#	DESIGNATION	LOCATION	AVAILABLE	RESERVATION	TOTAL WITHDRAWALS	COMMENT	STOCKID	
<input checked="" type="checkbox"/>	1	IB1	Default Seed Store	300.0g	200.0g	0.0g		SID4-1	<div>Return to List entries view</div> <div>List editing options</div> <div>Inventory management options</div> <div>Export Seed preparation list</div> <div>Import Seed preparation list</div> <div>Print Labels</div>

☒	2	IB2	Default Seed Store	300.0g	200.0g	0.0g		SID4-2
☒	3	IB3	Default Seed Store	300.0g	200.0g	0.0g		SID4-3
☒	4	IB4	Default Seed Store	300.0g	200.0g	0.0g		SID4-4
☒	5	IB5	Default Seed Store	300.0g	200.0g	0.0g		SID4-5
☒	6	IB6	Default Seed Store	300.0g	200.0g	0.0g		SID4-6
☒	7	IB7	Default Seed Store	300.0g	200.0g	0.0g		SID4-7
☒	8	IB8	Default Seed Store	300.0g	200.0g	0.0g		SID4-8
☒	9	IB9	Default Seed Store	300.0g	200.0g	0.0g		SID4-9
☒	10	IB10	Default Seed Store	300.0g	200.0g	0.0g		SID4-10
☒	11	IB11	Default Seed Store	300.0g	200.0g	0.0g		SID4-11
☒	12	IB12	Default Seed Store	300.0g	200.0g	0.0g		SID4-12

Now 200.0g of seed is reserved for each entry of the 25 F1s for eventual planting in the F1 nursery.

BREEDING ACTIVITIES

MAIZE TUTORIAL

Site AdminMy ProgramsGregor

Manage Germplasm

Manage Studies

Manage Samples

INFORMATION MANAGEMENT

STATISTICAL ANALYSIS

PROGRAM ADMINISTRATION

MANAGE GERmplasm

View ListsView Germplasm

List Details

Browse or search for a list to work with.

Show List Builder

F1 Germplasm

Inventory

Total Lots: 25Selected: 0

	#	DESIGNATION	LOCATION	AVAILABLE	RESERVATION	TOTAL WITHDRAWALS	COMMENT	STOCKID	SEED SOURCE
<input type="checkbox"/>	1	IB1	Default Seed Store	300.0g	200.0g	0.0g		SID4-1	Crossing Nursery:Default Breeding Location:201808.1/Crossing Nursery:Defa
<input type="checkbox"/>	2	IB2	Default Seed Store	300.0g	200.0g	0.0g		SID4-2	Crossing Nursery:Default Breeding Location:201808.2/Crossing Nursery:Defa
<input type="checkbox"/>	3	IB3	Default Seed Store	300.0g	200.0g	0.0g		SID4-3	Crossing Nursery:Default Breeding Location:201808.3/Crossing Nursery:Defa
<input type="checkbox"/>	4	IB4	Default Seed Store	300.0g	200.0g	0.0g		SID4-4	Crossing Nursery:Default Breeding Location:201808.4/Crossing Nursery:Defa
<input type="checkbox"/>	5	IB5	Default Seed Store	300.0g	200.0g	0.0g		SID4-5	Crossing Nursery:Default Breeding Location:201808.5/Crossing Nursery:Defa
<input type="checkbox"/>	6	IB6	Default Seed Store	300.0g	200.0g	0.0g		SID4-6	Crossing Nursery:Default Breeding Location:201808.6/Crossing Nursery:Defa
<input type="checkbox"/>	7	IB7	Default Seed Store	300.0g	200.0g	0.0g		SID4-7	Crossing Nursery:Default Breeding Location:201808.7/Crossing Nursery:Defa
<input type="checkbox"/>	8	IB8	Default Seed Store	300.0g	200.0g	0.0g		SID4-8	Crossing Nursery:Default Breeding Location:201808.8/Crossing Nursery:Defa
<input type="checkbox"/>	9	IB9	Default Seed Store	300.0g	200.0g	0.0g		SID4-9	Crossing Nursery:Default Breeding Location:201808.9/Crossing Nursery:Defa
<input type="checkbox"/>	10	IB10	Default Seed Store	300.0g	200.0g	0.0g		SID4-10	Crossing Nursery:Default Breeding Location:201808.10/Crossing Nursery:Defa
<input type="checkbox"/>	11	IB11	Default Seed Store	300.0g	200.0g	0.0g		SID4-11	Crossing Nursery:Default Breeding Location:201808.11/Crossing Nursery:Defa
<input type="checkbox"/>	12	IB12	Default Seed Store	300.0g	200.0g	0.0g		SID4-12	Crossing Nursery:Default Breeding Location:201808.12/Crossing Nursery:Defa
<input type="checkbox"/>	13	IB13	Default Seed Store	300.0g	200.0g	0.0g		SID4-13	Crossing Nursery:Default Breeding Location:201808.13/Crossing Nursery:Defa