

Concevoir une pépinière de croisement

BMS 12.0 Tutorials

Summary

This tutorial describes how to design a crossing nursery and making seed reservation and withdrawal for planting.

[Nursery Details](#)

[Select Study Settings](#)

[Management Details](#)

[Selection Variates](#)

[Germplasm & Checks](#)

[Reserve Seed for Planting](#)

[Withdraw Seed](#)

Nursery Details

- Both Nurseries and Trials are handled with the **Manage Studies** tool. Launch **Start a New Study** within the Maize Tutorial Program.
- Select **Nursery** from the drop down button under **Study Type**.



- Establish the basic details of the nursery

MANAGE STUDIES

Create Study Save Return to Manage Studies

BASIC DETAILS
* indicates a mandatory field

Study name: * Save in: * Change Folder

Description: * Created by: * Gregor Mendel

Study type: * Completion date: *

Objective:

☐ Use a previously created study as a template

Settings **Germplasm & Checks** Environments Experimental Design Measurements

STUDY SETTINGS Add SELECTION Add

Click Add to begin selecting items to record in this section.

Name	Description

- Study Name: Crossing Nursery
- Description: 2018
- Study type: Nursery
- Objective: Generate F1 seed for F1 nursery
- Creation Date: Default
- Completion Date: Blank
- Any previously created study can be used as a template. Do not use a previously created study as a template in this example.
- Select **Save**

MANAGE STUDIES

Create Study Save Return to Manage Studies

BASIC DETAILS
* indicates a mandatory field

Study name: * Save in: * Change Folder

Description: * Created by: * Gregor Mendel

Study type: * Completion date: *

Objective:

☐ Use a previously created study as a template

Settings **Germplasm & Checks** Environments Experimental Design Measurements

STUDY SETTINGS Add SELECTION Add

Click Add to begin selecting items to record in this section.

Browse Studies Cancel Select

Name	Description

- After saving, the view refreshes with the basic details collapsed.

MANAGE STUDIES

Crossing Nursery Save Return to Manage Studies

BASIC DETAILS

Settings **Germplasm & Checks** Environments Experimental Design Measurements

STUDY SETTINGS Add SELECTION Add

Click Add to begin selecting items to record in this section.

Name	Description

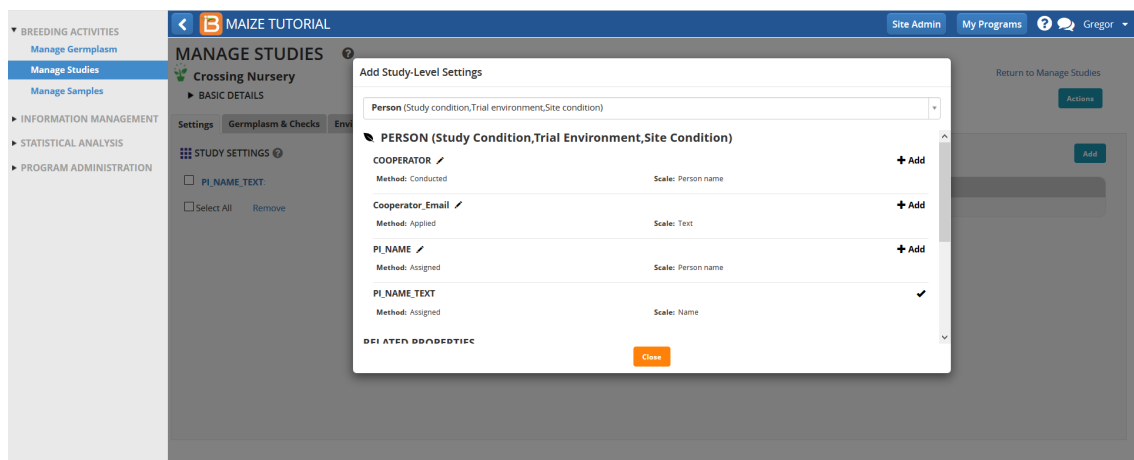
Select Study Settings

- Establish the nursery settings by selecting the **Add** button next to **Study Settings** and selecting from available options.

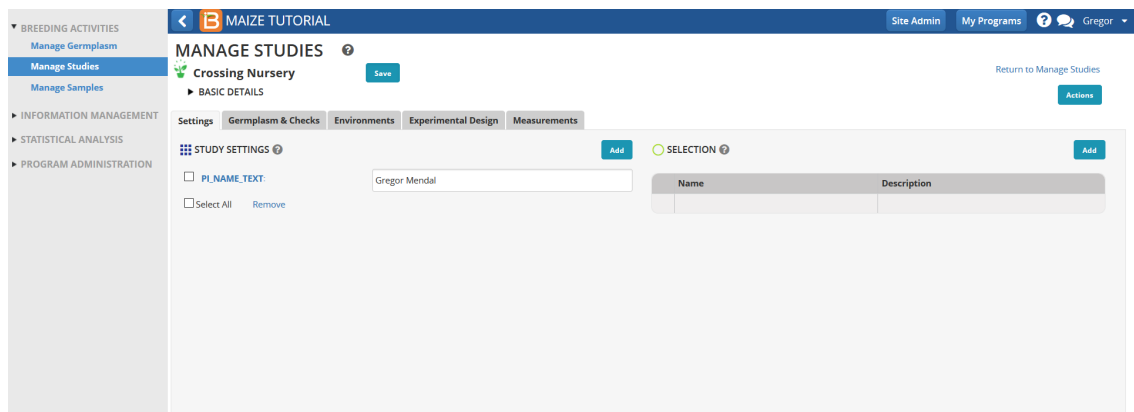
Management Details

Management Details are variables describing the management of the whole nursery.

- Select the **Add** button. Search for Person and select PI_Name_Text



Other available management details can be selected if needed.



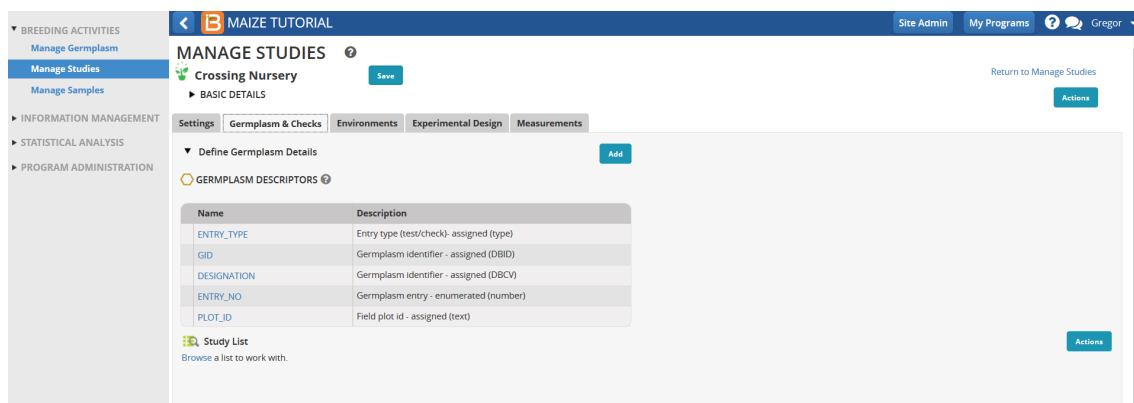
Selection Variates

Selection Variates describe the units of selection in the nursery. For example, choosing number of plants selected allows a breeder to choose specific number of plants to advance to the next generation.

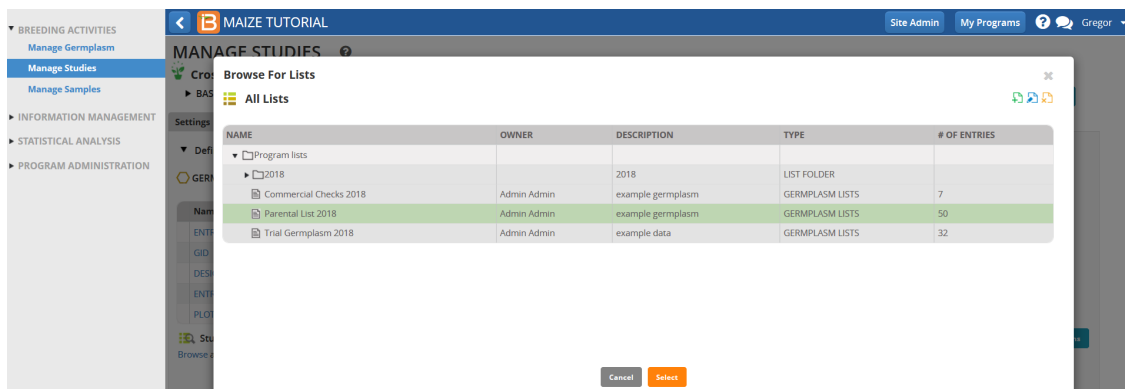
Since this is a crossing nursery all successful crosses (crosses resulting in seed/inventory) will be advanced, therefore, no selection criteria is required.

Germplasm & Checks

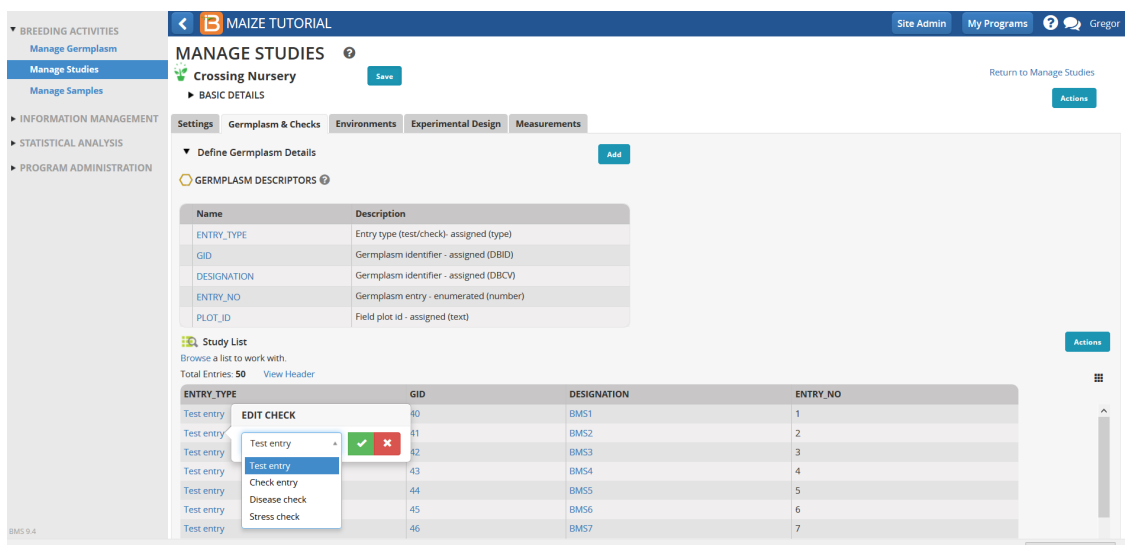
- Open the **Germplasm and Checks** tab. **Browse** for a germplasm list for the F1 nursery.



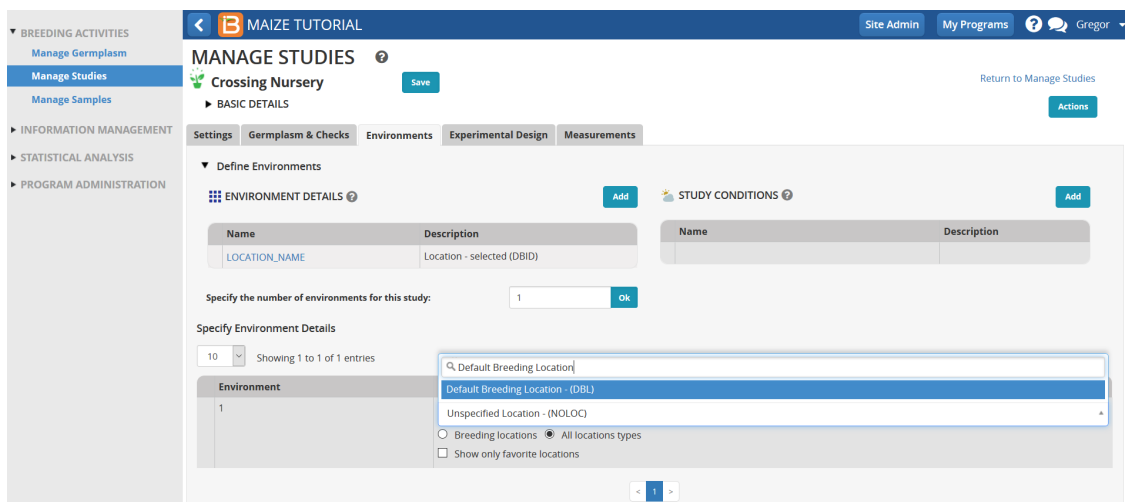
- Highlight the 50 entry Parental Germplasm list and Select.



Default Germplasm descriptors are indicated in column headings. Entry Type is identified as Test Entry. This example of the crossing nursery will not have any checks. If some entries in the selected list are to be considered as checks, the entry type can be changed by clicking on the Test Entry and selecting from the resulting window.



- Select the **Environments** tab. Since this is a crossing nursery, the number of environments is one. Specify environment details by selecting a Location Name. Specific location names can be created by using the Manage Locations icon.
- For the F1 nursery, we will use Default Breeding Location, which can be selected from the drop down icon available under the Location Name.



- Select the **Experimental Design** tab.
- Several Design Types are available in the drop down icon. Since this is a crossing nursery, select the **Entry List Order design**.

BREEDING ACTIVITIES

Manage Germplasm

Manage Studies

Manage Samples

INFORMATION MANAGEMENT

STATISTICAL ANALYSIS

PROGRAM ADMINISTRATION

MAIZE TUTORIAL

Site AdminMy ProgramsGregor

MANAGE STUDIES

Crossing Nursery

Save

Return to Manage Studies

Actions

SettingsGermplasm & ChecksEnvironmentsExperimental DesignMeasurements

Experimental Design

CHOOSE A DESIGN TYPE

Select the design type you would like to use for this study:

Or import an experimental design.

SPECIFY PLOT NUMBERING

Specify the starting plot number:

1

Please ChoosePlease ChooseRandomized Complete Block DesignResolvable Incomplete Block DesignRow-and-ColumnAugmented Randomized Block designEntry list order

Generate Design

SUMMARY OF DESIGN DETAILS

Number of environments: 1

Treatment factor: ENTRY_NO

Plot factor: PLOT_NO

- Select **Generate Design**

BREEDING ACTIVITIES

Manage Germplasm

Manage Studies

Manage Samples

INFORMATION MANAGEMENT

STATISTICAL ANALYSIS

PROGRAM ADMINISTRATION

MAIZE TUTORIAL

Site AdminMy ProgramsGregor

MANAGE STUDIES

Crossing Nursery

Save

Return to Manage Studies

Actions

SettingsGermplasm & ChecksEnvironmentsExperimental DesignMeasurements

Experimental Design

CHOOSE A DESIGN TYPE

Select the design type you would like to use for this study:

Or import an experimental design.

SPECIFY PLOT NUMBERING

Specify the starting plot number:

1

Generate Design

SUMMARY OF DESIGN DETAILS

Number of environments: 1

Treatment factor: ENTRY_NO

Plot factor: PLOT_NO

- Select **Save** to save the nursery details.

After all the nursery criteria have been specified, saving the nursery populates the Measurement tab and the Actions menu options are activated.

BREEDING ACTIVITIES

Manage Germplasm

Manage Studies

Manage Samples

INFORMATION MANAGEMENT

STATISTICAL ANALYSIS

PROGRAM ADMINISTRATION

MAIZE TUTORIAL

Site AdminMy ProgramsGregor

MANAGE STUDIES

Crossing Nursery

Save

Return to Manage Studies

Actions

SettingsGermplasm & ChecksEnvironmentsExperimental DesignMeasurements

Define Measurement Details

Add

TRAITS

NameDescriptionInput Variables

Please save the study to be able to edit measurements

Records per page: 100Showing 1 to 50 of 50 entries

TRIAL_INSTANCE	ENTRY_TYPE	GID	DESIGNATION	ENTRY_NO	PLOT_NO
1	T	40	BMS1	1	1
1	T	41	BMS2	2	2
1	T	42	BMS3	3	3
1	T	43	BMS4	4	4
1	T	44	BMS5	5	5
1	T	45	BMS6	6	6
1	T	46	BMS7	7	7
1	T	47	BMS8	8	8
1	T	48	BMS9	9	9

Reserve Seed for Planting

- Return to **Manage Germplasm** tool and browse to the Parental Germplasm list. Close directory popup window.

MANAGE GERMLASM

View Lists View Germplasm

List Details
Browse or search for a list to work with.

Parental List 2018

List entries
Total Entries: 50 Selected: 0

#	DESIGNATION	CROSS	LOTS	AVAILABLE	ENTRY_CODE	GID	GROUP ID	STOCK
1	BMS1	-	1	100000.0 g	1	40	-	SID3-1
2	BMS2	-	1	100000.0 g	2	41	-	SID3-2
3	BMS3	-	1	100000.0 g	3	42	-	SID3-3
4	BMS4	-	1	100000.0 g	4	43	-	SID3-4
5	BMS5	-	1	100000.0 g	5	44	-	SID3-5
6	BMS6	-	1	100000.0 g	6	45	-	SID3-6
7	BMS7	-	1	100000.0 g	7	46	-	SID3-7
8	BMS8	-	1	100000.0 g	8	47	-	SID3-8
9	BMS9	-	1	100000.0 g	9	48	-	SID3-9
10	BMS10	-	1	100000.0 g	10	49	-	SID3-10
11	BMS11	-	1	100000.0 g	11	50	-	SID3-11
12	BMS12	-	1	100000.0 g	12	51	-	SID3-12
13	BMS13	-	1	100000.0 g	13	52	-	SID3-13
14	BMS14	-	1	100000.0 g	14	53	-	SID3-14
15	BMS15	-	1	100000.0 g	15	54	-	SID3-15
16	BMS16	-	1	100000.0 g	16	55	-	SID3-16
17	BMS17	-	1	100000.0 g	17	56	-	SID3-17

Browse for Lists

All Lists

NAME	OWNER	DESCRIPTION	TYPE	# OF ENTRIES
2018			LIST FOLDER	
Commercial Checks 201	Admin Admin	example germplasm	GERMPLASM LISTS	7
Parental List 2018	Admin Admin	example germplasm	GERMPLASM LISTS	50
Trial Germplasm 2018	Admin Admin	example data	GERMPLASM LISTS	32

- Select **Inventory View** from the **Actions** menu.

MANAGE GERMLASM

View Lists View Germplasm

List Details
Browse or search for a list to work with.

Parental List 2018

List entries
Total Entries: 50 Selected: 0

#	DESIGNATION	CROSS	LOTS	AVAILABLE	ENTRY_CODE	GID	GROUP ID	STOCK
1	BMS1	-	1	100000.0 g	1	40	-	SID3-1
2	BMS2	-	1	100000.0 g	2	41	-	SID3-2
3	BMS3	-	1	100000.0 g	3	42	-	SID3-3
4	BMS4	-	1	100000.0 g	4	43	-	SID3-4
5	BMS5	-	1	100000.0 g	5	44	-	SID3-5
6	BMS6	-	1	100000.0 g	6	45	-	SID3-6
7	BMS7	-	1	100000.0 g	7	46	-	SID3-7
8	BMS8	-	1	100000.0 g	8	47	-	SID3-8
9	BMS9	-	1	100000.0 g	9	48	-	SID3-9
10	BMS10	-	1	100000.0 g	10	49	-	SID3-10
11	BMS11	-	1	100000.0 g	11	50	-	SID3-11
12	BMS12	-	1	100000.0 g	12	51	-	SID3-12
13	BMS13	-	1	100000.0 g	13	52	-	SID3-13
14	BMS14	-	1	100000.0 g	14	53	-	SID3-14
15	BMS15	-	1	100000.0 g	15	54	-	SID3-15
16	BMS16	-	1	100000.0 g	16	55	-	SID3-16
17	BMS17	-	1	100000.0 g	17	56	-	SID3-17

Inventory view
List editing options
Export list
Coding and Grouping Options

- Select all 50 entries and choose **Reserve Inventory** from the Inventory Management Options of the **Actions** menu. In this example, all 50 entries have a seed inventory of 100000 gm of seed.

MANAGE GERMLASM

View Lists View Germplasm

List Details
Browse or search for a list to work with.

Parental List 2018

Inventory
Total Lots: 50 Selected: 50

#	DESIGNATION	LOCATION	AVAILABLE	RESERVATION	TOTAL WITHDRAWALS	From List Import	SID3	STOCK
1	BMS1	Default Seed Store	100000.0g	0.0g	0.0g	From List Import	SID3-4	67
2	BMS2	Default Seed Store	100000.0g	0.0g	0.0g	From List Import	SID3-5	72
3	BMS3	Default Seed Store	100000.0g	0.0g	0.0g	From List Import	SID3-6	73
4	BMS4	Default Seed Store	100000.0g	0.0g	0.0g	From List Import	SID3-7	70
5	BMS5	Default Seed Store	100000.0g	0.0g	0.0g	From List Import	SID3-8	71
6	BMS6	Default Seed Store	100000.0g	0.0g	0.0g	From List Import	SID3-9	77
7	BMS7	Default Seed Store	100000.0g	0.0g	0.0g	From List Import	SID3-10	76
8	BMS8	Default Seed Store	100000.0g	0.0g	0.0g	From List Import	SID3-11	75
9	BMS9	Default Seed Store	100000.0g	0.0g	0.0g	From List Import	SID3-12	74
10	BMS10	Default Seed Store	100000.0g	0.0g	0.0g	From List Import	SID3-13	81
11	BMS11	Default Seed Store	100000.0g	0.0g	0.0g	From List Import	SID3-14	80
12	BMS12	Default Seed Store	100000.0g	0.0g	0.0g	From List Import	SID3-15	79
13	BMS13	Default Seed Store	100000.0g	0.0g	0.0g	From List Import	SID3-16	78
14	BMS14	Default Seed Store	100000.0g	0.0g	0.0g	From List Import	SID3-17	85
15	BMS15	Default Seed Store	100000.0g	0.0g	0.0g			
16	BMS16	Default Seed Store	100000.0g	0.0g	0.0g			
17	BMS17	Default Seed Store	100000.0g	0.0g	0.0g			

Reserve inventory
Save changes
Cancel Reservations
Close lots

Return to List entries view
List editing options
Inventory management options
Export Seed preparation list
Import Seed preparation list
Print Labels

- Each plot in the Crossing Nursery requires 100g of seed for planting. Enter 100g for SEED_AMOUNT, and select **Finish**.

MANAGE GERMLASM

View Lists View Germplasm

List Details
Browse or search for a list to work with.

Parental List 2018

Inventory
Total Lots: 50 Selected: 50

Seed Preparation

Specify the amount of seed you would like to prepare for each selected lot. (50 selected)

Amount to Reserve ☒ Specify amount in SEED_AMOUNT.g (100)
☐ Prepare all available seed

Notes
For crossing nursery 2018

☐ Commit seed withdrawal on saving

Cancel Finish

#	DESIGNATION	LOCATION	AVAILABLE	RESERVATION	TOTAL WITHDRAWALS	COMMENT	STOCKID	SEED_SOURCE	LOT_ID
1	BMS1	Default Seed Store	99900.0g	100.0g	0.0g	From List Import	SID3-1		68
2	BMS2	Default Seed Store	99900.0g	100.0g	0.0g	From List Import	SID3-2		69
3	BMS3	Default Seed Store	99900.0g	100.0g	0.0g	From List Import	SID3-3		66
4	BMS4	Default Seed Store	99900.0g	100.0g	0.0g	From List Import	SID3-4		67
5	BMS5	Default Seed Store	99900.0g	100.0g	0.0g	From List Import	SID3-5		72
6	BMS6	Default Seed Store	99900.0g	100.0g	0.0g	From List Import	SID3-6		73
7	BMS7	Default Seed Store	99900.0g	100.0g	0.0g	From List Import	SID3-7		70
8	BMS8	Default Seed Store	99900.0g	100.0g	0.0g	From List Import	SID3-8		71
9	BMS9	Default Seed Store	99900.0g	100.0g	0.0g	From List Import	SID3-9		77
10	BMS10	Default Seed Store	99900.0g	100.0g	0.0g	From List Import	SID3-10		76
11	BMS11	Default Seed Store	99900.0g	100.0g	0.0g	From List Import	SID3-11		75
12	BMS12	Default Seed Store	99900.0g	100.0g	0.0g	From List Import	SID3-12		74
13	BMS13	Default Seed Store	99900.0g	100.0g	0.0g	From List Import	SID3-13		81
14	BMS14	Default Seed Store	99900.0g	100.0g	0.0g	From List Import	SID3-14		80
15	BMS15	Default Seed Store	99900.0g	100.0g	0.0g	From List Import	SID3-15		79
16	BMS16	Default Seed Store	99900.0g	100.0g	0.0g	From List Import	SID3-16		78
17	BMS17	Default Seed Store	99900.0g	100.0g	0.0g	From List Import	SID3-17		85

- All 50 entries now show a reserved (pending) withdrawal amount of 100g of seed.

MANAGE GERMLASM

View Lists View Germplasm

List Details
Browse or search for a list to work with.

Parental List 2018

Inventory
Total Lots: 50 Selected: 50

#	DESIGNATION	LOCATION	AVAILABLE	RESERVATION	TOTAL WITHDRAWALS	COMMENT	STOCKID	SEED_SOURCE	LOT_ID
1	BMS1	Default Seed Store	99900.0g	100.0g	0.0g	From List Import	SID3-1		68
2	BMS2	Default Seed Store	99900.0g	100.0g	0.0g	From List Import	SID3-2		69
3	BMS3	Default Seed Store	99900.0g	100.0g	0.0g	From List Import	SID3-3		66
4	BMS4	Default Seed Store	99900.0g	100.0g	0.0g	From List Import	SID3-4		67
5	BMS5	Default Seed Store	99900.0g	100.0g	0.0g	From List Import	SID3-5		72
6	BMS6	Default Seed Store	99900.0g	100.0g	0.0g	From List Import	SID3-6		73
7	BMS7	Default Seed Store	99900.0g	100.0g	0.0g	From List Import	SID3-7		70
8	BMS8	Default Seed Store	99900.0g	100.0g	0.0g	From List Import	SID3-8		71
9	BMS9	Default Seed Store	99900.0g	100.0g	0.0g	From List Import	SID3-9		77
10	BMS10	Default Seed Store	99900.0g	100.0g	0.0g	From List Import	SID3-10		76
11	BMS11	Default Seed Store	99900.0g	100.0g	0.0g	From List Import	SID3-11		75
12	BMS12	Default Seed Store	99900.0g	100.0g	0.0g	From List Import	SID3-12		74
13	BMS13	Default Seed Store	99900.0g	100.0g	0.0g	From List Import	SID3-13		81
14	BMS14	Default Seed Store	99900.0g	100.0g	0.0g	From List Import	SID3-14		80
15	BMS15	Default Seed Store	99900.0g	100.0g	0.0g	From List Import	SID3-15		79
16	BMS16	Default Seed Store	99900.0g	100.0g	0.0g	From List Import	SID3-16		78
17	BMS17	Default Seed Store	99900.0g	100.0g	0.0g	From List Import	SID3-17		85

- Save changes from the Inventory Management Options of the **Actions** menu.

MANAGE GERMLASM

View Lists View Germplasm

List Details
Browse or search for a list to work with.

Parental List 2018

Inventory
Total Lots: 50 Selected: 50

#	DESIGNATION	LOCATION	AVAILABLE	RESERVATION	TOTAL WITHDRAWALS	COMMENT	STOCKID	SEED_SOURCE	LOT_ID
1	BMS1	Default Seed Store	99900.0g	100.0g	0.0g	From List Import	SID3-1		68
2	BMS2	Default Seed Store	99900.0g	100.0g	0.0g	From List Import	SID3-2		69
3	BMS3	Default Seed Store	99900.0g	100.0g	0.0g	From List Import	SID3-3		66
4	BMS4	Default Seed Store	99900.0g	100.0g	0.0g	From List Import	SID3-4		67
5	BMS5	Default Seed Store	99900.0g	100.0g	0.0g	From List Import	SID3-5		72
6	BMS6	Default Seed Store	99900.0g	100.0g	0.0g	From List Import	SID3-6		73
7	BMS7	Default Seed Store	99900.0g	100.0g	0.0g	From List Import	SID3-7		70
8	BMS8	Default Seed Store	99900.0g	100.0g	0.0g	From List Import	SID3-8		71
9	BMS9	Default Seed Store	99900.0g	100.0g	0.0g	From List Import	SID3-9		77
10	BMS10	Default Seed Store	99900.0g	100.0g	0.0g	From List Import	SID3-10		76
11	BMS11	Default Seed Store	99900.0g	100.0g	0.0g	From List Import	SID3-11		75
12	BMS12	Default Seed Store	99900.0g	100.0g	0.0g	From List Import	SID3-12		74
13	BMS13	Default Seed Store	99900.0g	100.0g	0.0g	From List Import	SID3-13		81
14	BMS14	Default Seed Store	99900.0g	100.0g	0.0g	From List Import	SID3-14		80
15	BMS15	Default Seed Store	99900.0g	100.0g	0.0g	From List Import	SID3-15		79
16	BMS16	Default Seed Store	99900.0g	100.0g	0.0g	From List Import	SID3-16		78
17	BMS17	Default Seed Store	99900.0g	100.0g	0.0g	From List Import	SID3-17		85

Actions menu options:

- Return to List entries View
- List editing options
- Inventory management options
- Export Seed preparation list
- Import Seed preparation list
- Print Labels

- Select **Export Seed Preparation list (.xls)** to take to the stock room.

BREEDING ACTIVITIES

Manage Germplasm

Manage Studies

Manage Samples

INFORMATION MANAGEMENT

STATISTICAL ANALYSIS

PROGRAM ADMINISTRATION

MAIZE TUTORIAL

Site Admin My Programs ? Gregor

MANAGE GERmplasm

View Lists View Germplasm

List Details

Browse or search for a list to work with.

Show List Builder

Parental List 2018

Inventory

Total Lots: 50 Selected: 0

#	DESIGNATION	LOCATION	AVAILABLE	RESERVATION	TOTAL WITHDRAWALS	
<input type="checkbox"/>	1 BMS1	Default Seed Store	99900.0g	100.0g	0.0g	
<input type="checkbox"/>	2 BMS2	Default Seed Store	99900.0g	100.0g	0.0g	
<input type="checkbox"/>	3 BMS3	Default Seed Store	99900.0g	100.0g	0.0g	
<input type="checkbox"/>	4 BMS4	Default Seed Store	99900.0g	100.0g	0.0g	
<input type="checkbox"/>	5 BMS5	Default Seed Store	99900.0g	100.0g	0.0g	
<input type="checkbox"/>	6 BMS6	Default Seed Store	99900.0g	100.0g	0.0g	
<input type="checkbox"/>	7 BMS7	Default Seed Store	99900.0g	100.0g	0.0g	
<input type="checkbox"/>	8 BMS8	Default Seed Store	99900.0g	100.0g	0.0g	
<input type="checkbox"/>	9 BMS9	Default Seed Store	99900.0g	100.0g	0.0g	
<input type="checkbox"/>	10 BMS10	Default Seed Store	99900.0g	100.0g	0.0g	
<input type="checkbox"/>	11 BMS11	Default Seed Store	99900.0g	100.0g	0.0g	
<input type="checkbox"/>	12 BMS12	Default Seed Store	99900.0g	100.0g	0.0g	
<input type="checkbox"/>	13 BMS13	Default Seed Store	99900.0g	100.0g	0.0g	
<input type="checkbox"/>	14 BMS14	Default Seed Store	99900.0g	100.0g	0.0g	
<input type="checkbox"/>	15 BMS15	Default Seed Store	99900.0g	100.0g	0.0g	
<input type="checkbox"/>	16 BMS16	Default Seed Store	99900.0g	100.0g	0.0g	
<input type="checkbox"/>	17 BMS17	Default Seed Store	99900.0g	100.0g	0.0g	

Reserve inventory

Save changes

Cancel Reservations

Close lots

Return to List entries view

List editing options

Inventory management options

Export Seed preparation list

Import Seed preparation list

Print Labels

From List Import SID3-4 67

From List Import SID3-5 72

From List Import SID3-6 73

From List Import SID3-7 70

From List Import SID3-8 71

From List Import SID3-9 77

From List Import SID3-10 76

From List Import SID3-11 75

From List Import SID3-12 74

From List Import SID3-13 81

From List Import SID3-14 80

From List Import SID3-15 79

From List Import SID3-16 78

From List Import SID3-17 85

Select All

The seed preparation list contains two worksheets. The description sheet describes the germplasm list and the observation sheet provides details about the pending seed withdrawal. The Amount Withdrawn column on the Observation sheet is empty and ready to record the actual withdrawal.

ENTRY	DESIGNATION	GID	CROSS	SOURCE	LOT_ID	LOT_Location	STOCK_ID	TRN_ID	Withdrawal Amount	Amount Withdrawn	Balance
1	BMS1	40	-		68	Default Seed Store	SID3-1	109	100.0		
2	BMS2	41	-		69	Default Seed Store	SID3-2	105	100.0		
3	BMS3	42	-		66	Default Seed Store	SID3-3	95	100.0		
4	BMS4	43	-		67	Default Seed Store	SID3-4	115	100.0		
5	BMS5	44	-		72	Default Seed Store	SID3-5	121	100.0		
6	BMS6	45	-		73	Default Seed Store	SID3-6	134	100.0		

Withdraw Seed

- Update the Amount Withdrawn column for all entries with 100.0g. Save the seed preparation (.xls) file on your computer.

ENTRY	DESIGNATION	GID	CROSS	SOURCE	LOT_ID	LOT_Location	STOCK_ID	TRN_ID	Withdrawal Amount	Amount Withdrawn	Balance
1	BMS1	40	-		68	Default Seed Store	SID3-1	109	100.0	100	
2	BMS2	41	-		69	Default Seed Store	SID3-2	105	100.0	100	
3	BMS3	42	-		66	Default Seed Store	SID3-3	95	100.0	100	
4	BMS4	43	-		67	Default Seed Store	SID3-4	115	100.0	100	
5	BMS5	44	-		72	Default Seed Store	SID3-5	121	100.0	100	
6	BMS6	45	-		73	Default Seed Store	SID3-6	134	100.0	100	

- Select import seed preparation list from the **Actions** menu.

BREEDING ACTIVITIES

Manage Germplasm

Manage Studies

Manage Samples

INFORMATION MANAGEMENT

STATISTICAL ANALYSIS

PROGRAM ADMINISTRATION

MAIZE TUTORIAL

Site Admin My Programs ? Gregor

MANAGE GERmplasm

View Lists View Germplasm

List Details

Browse or search for a list to work with.

Show List Builder

Parental List 2018

Inventory

Total Lots: 50 Selected: 0

#	DESIGNATION	LOCATION	AVAILABLE	RESERVATION	TOTAL WITHDRAWALS	COMMENT	STOCKID	SE
<input type="checkbox"/>	1 BMS1	Default Seed Store	99900.0g	100.0g	0.0g	From List Import	SID3-1	
<input type="checkbox"/>	2 BMS2	Default Seed Store	99900.0g	100.0g	0.0g	From List Import	SID3-2	
<input type="checkbox"/>	3 BMS3	Default Seed Store	99900.0g	100.0g	0.0g	From List Import	SID3-3	
<input type="checkbox"/>	4 BMS4	Default Seed Store	99900.0g	100.0g	0.0g	From List Import	SID3-4	
<input type="checkbox"/>	5 BMS5	Default Seed Store	99900.0g	100.0g	0.0g	From List Import	SID3-5	
<input type="checkbox"/>	6 BMS6	Default Seed Store	99900.0g	100.0g	0.0g	From List Import	SID3-6	
<input type="checkbox"/>	7 BMS7	Default Seed Store	99900.0g	100.0g	0.0g	From List Import	SID3-7	
<input type="checkbox"/>	8 BMS8	Default Seed Store	99900.0g	100.0g	0.0g	From List Import	SID3-8	

Return to List entries view

List editing options

Inventory management options

Export Seed preparation list

Import Seed preparation list

Print Labels

67

72

73

70

71

- Browse to the updated seed preparation file that was saved and select **Finish**.

BREEDING ACTIVITIES

Manage Germplasm

Manage Studies

Manage Samples

INFORMATION MANAGEMENT

STATISTICAL ANALYSIS

PROGRAM ADMINISTRATION

MAIZE TUTORIAL

Site Admin My Programs ? Gregor

MANAGE GERMLASM

View Lists View Germplasm

List Details

Browse or search for a list to work with.

Parental List 2018

Inventory

Total Lots: 50 Selected: 0

1

2

3

4

5

6

7

8

9

10

11

BMS1

BMS2

BMS3

BMS4

BMS5

BMS6

BMS7

BMS8

BMS9

BMS10

BMS11

Default Seed Store

Default Seed Store

Default Seed Store

Default Seed Store

Default Seed Store

Default Seed Store

Default Seed Store

Default Seed Store

Default Seed Store

Default Seed Store

Default Seed Store

99900.0g

99900.0g

99900.0g

99900.0g

99900.0g

99900.0g

99900.0g

99900.0g

99900.0g

99900.0g

99900.0g

0.0g

0.0g

0.0g

0.0g

0.0g

0.0g

0.0g

0.0g

0.0g

0.0g

0.0g

0.0g

0.0g

0.0g

0.0g

0.0g

0.0g

0.0g

0.0g

0.0g

0.0g

0.0g

From List Import

From List Import

From List Import

From List Import

From List Import

From List Import

From List Import

From List Import

From List Import

From List Import

From List Import

SID3-1

SID3-2

SID3-3

SID3-4

SID3-5

SID3-6

SID3-7

SID3-8

SID3-9

SID3-10

SID3-11

68

69

66

67

72

73

70

71

77

76

75

Import Seed preparation list

Choose the seed preparation file you would like to import.

Selected import file: Parental List 2018-Seed Prep.xls

Cancel Finish

- Select **Continue**.

BREEDING ACTIVITIES

Manage Germplasm

Manage Studies

Manage Samples

INFORMATION MANAGEMENT

STATISTICAL ANALYSIS

PROGRAM ADMINISTRATION

MAIZE TUTORIAL

Site Admin My Programs ? Gregor

MANAGE GERMLASM

View Lists View Germplasm

List Details

Browse or search for a list to work with.

Parental List 2018

Inventory

Total Lots: 50 Selected: 0

1

2

3

4

5

6

7

8

9

10

11

BMS1

BMS2

BMS3

BMS4

BMS5

BMS6

BMS7

BMS8

BMS9

BMS10

BMS11

Default Seed Store

Default Seed Store

Default Seed Store

Default Seed Store

Default Seed Store

Default Seed Store

Default Seed Store

Default Seed Store

Default Seed Store

Default Seed Store

Default Seed Store

99900.0g

99900.0g

99900.0g

99900.0g

99900.0g

99900.0g

99900.0g

99900.0g

99900.0g

99900.0g

99900.0g

100.0g

100.0g

100.0g

100.0g

100.0g

100.0g

100.0g

100.0g

100.0g

100.0g

100.0g

0.0g

0.0g

0.0g

0.0g

0.0g

0.0g

0.0g

0.0g

0.0g

0.0g

0.0g

From List Import

From List Import

From List Import

From List Import

From List Import

From List Import

From List Import

From List Import

From List Import

From List Import

From List Import

SID3-1

SID3-2

SID3-3

SID3-4

SID3-5

SID3-6

SID3-7

SID3-8

SID3-9

SID3-10

SID3-11

68

69

66

67

72

73

70

71

77

76

75

Seed Import Status

1

2

3

4

5

BMS1

BMS2

BMS3

BMS4

BMS5

40

41

42

43

44

68

69

66

67

72

125

130

91

100

96

100.0

100.0

100.0

100.0

100.0

BALANCE

BALANCE

BALANCE

BALANCE

BALANCE

PROCESSING STATUS

PROCESSING STATUS

PROCESSING STATUS

PROCESSING STATUS

PROCESSING STATUS

Cancel

Continue

The withdrawal is complete. The column 'Total Withdrawals' indicates that 100g of seed has been withdrawn for each entry.

BREEDING ACTIVITIES

Manage Germplasm

Manage Studies

Manage Samples

INFORMATION MANAGEMENT

STATISTICAL ANALYSIS

PROGRAM ADMINISTRATION

MAIZE TUTORIAL

Site Admin My Programs ? Gregor

MANAGE GERMLASM

View Lists View Germplasm

List Details

Browse or search for a list to work with.

Parental List 2018

Inventory

Total Lots: 50 Selected: 0

1

2

3

4

5

6

7

8

9

10

11

BMS1

BMS2

BMS3

BMS4

BMS5

BMS6

BMS7

BMS8

BMS9

BMS10

BMS11

Default Seed Store

Default Seed Store

Default Seed Store

Default Seed Store

Default Seed Store

Default Seed Store

Default Seed Store

Default Seed Store

Default Seed Store

Default Seed Store

Default Seed Store

99900.0g

99900.0g

99900.0g

99900.0g

99900.0g

99900.0g

99900.0g

99900.0g

99900.0g

99900.0g

99900.0g

100.0g

100.0g

100.0g

100.0g

100.0g

100.0g

100.0g

100.0g

100.0g

100.0g

100.0g

0.0g

0.0g

0.0g

0.0g

0.0g

0.0g

0.0g

0.0g

0.0g

0.0g

0.0g

From List Import

From List Import

From List Import

From List Import

From List Import

From List Import

From List Import

From List Import

From List Import

From List Import

From List Import

SID3-1

SID3-2

SID3-3

SID3-4

SID3-5

SID3-6

SID3-7

SID3-8

SID3-9

SID3-10

SID3-11

68

69

66

67

72

73

70

71

77

76

75

Success!

Seed inventory list imported successfully

Show List Builder