

Install Breeding View

BMS 13.0-14.0 Manual

[About Breeding View](#)
[Breeding View Installer](#)
[Install Breeding View](#)
[Obtain License Code](#)
[Related](#)

About Breeding View

Breeding View (BV) is statistical analysis software that accompanies the Breeding Management System. BV is a collaboration with between the Integrated Breeding Platform and VSNI, the makers of the [Genstat](#) statistical package. BV is an extremely user friendly statistical software that allows breeders to quickly access their results. Trial data exported from the Breeding Management System is perfectly formatted for analysis by BV.

Breeding View can be installed on computers running the Windows operating system. You must have administrative access to your computer to install BV. If your institution controls your computer's administrative access, you will need to contact your IT department for assistance.

Breeding View Installer

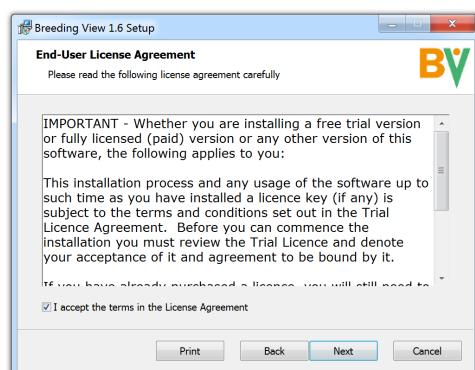
If you are a licensed BMS user, you will be given a Breeding View installer and license code. See your system administrator for more information. If you would like to demo BV [contact us here](#) for temporary access.

Install Breeding View

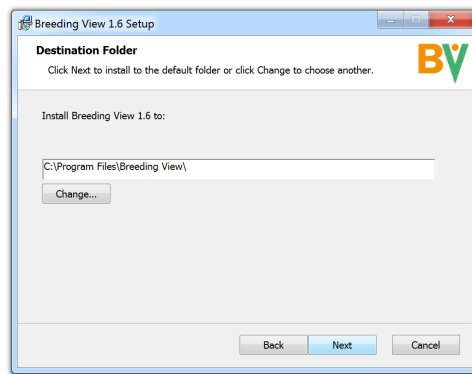
- Select Next.



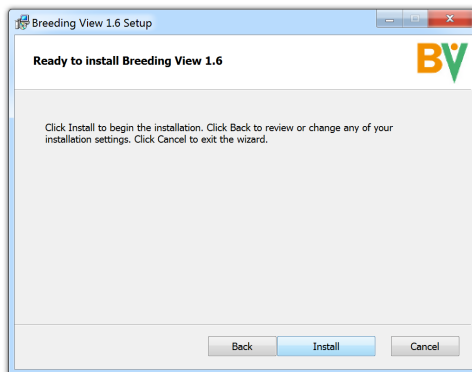
- Read and agree to the terms of the License Agreement.



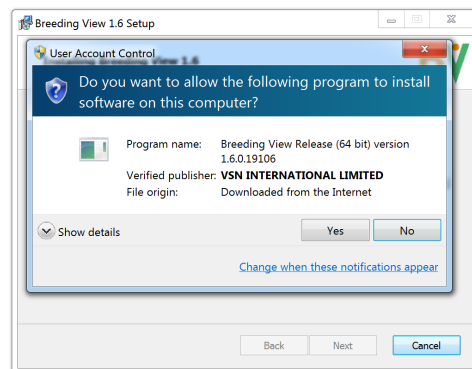
- Accept the default directory location for BV installation or specify a custom location.



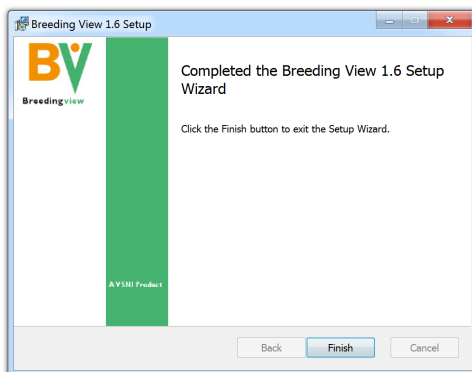
- Select Install.



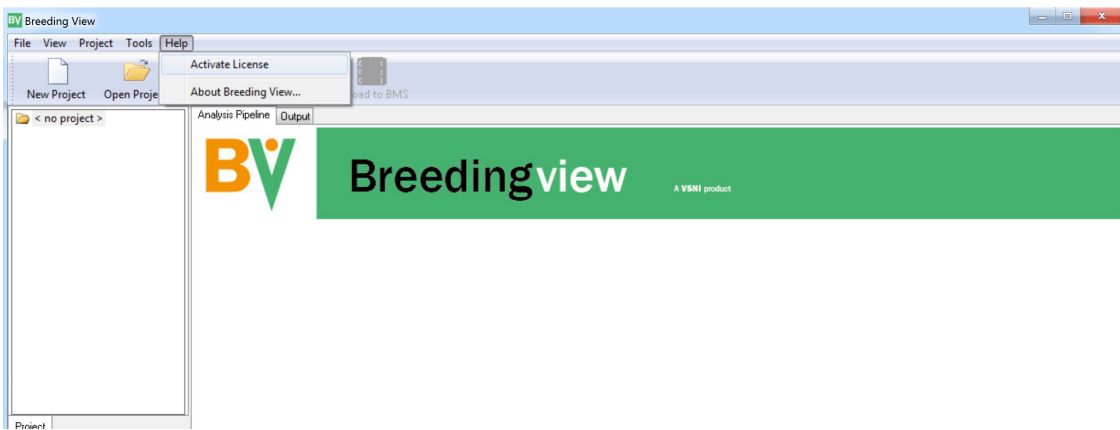
- Select Yes.



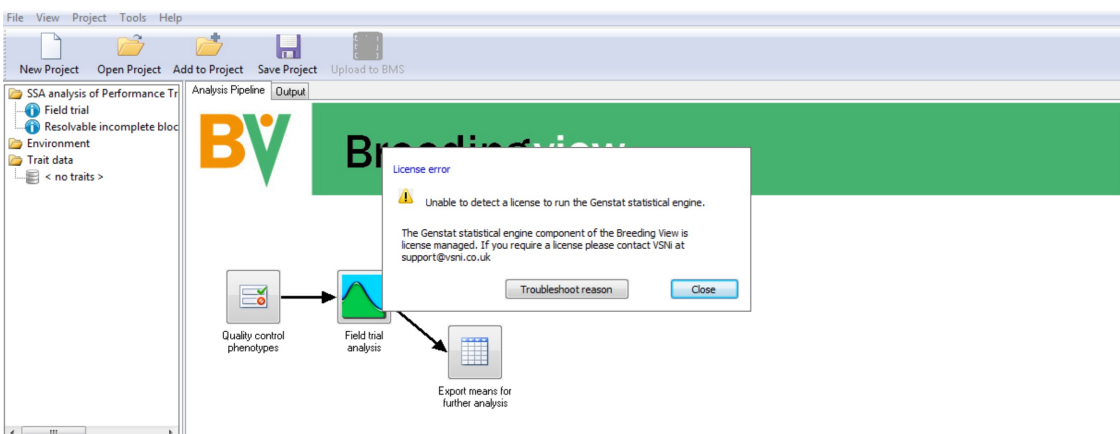
- Select Finish.



- Breeding View can now be opened.



- However, no analysis can be run until a license code is provided to the application. Select Activate License from the Help menu or Troubleshoot Reason from the License Error message.



Obtain License Code

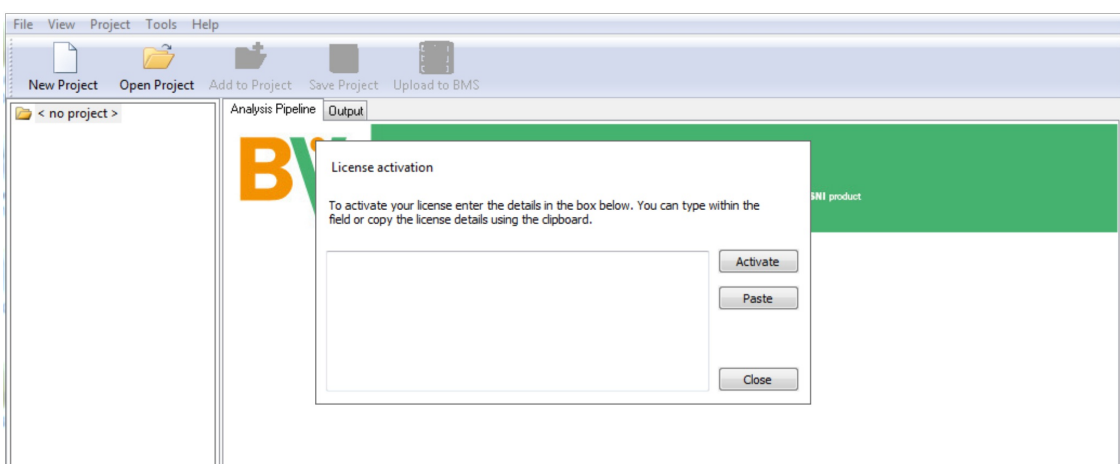
Users of the SERVER Edition:

If you are using a institutional version of Breeding Management System and BV, a license code will be provided to you by your institution. If you are using a demonstration version of the Breeding Management System and BV, a temporary license code will be provided to you by your IBP Deployment Representative along with your access to the demo server.

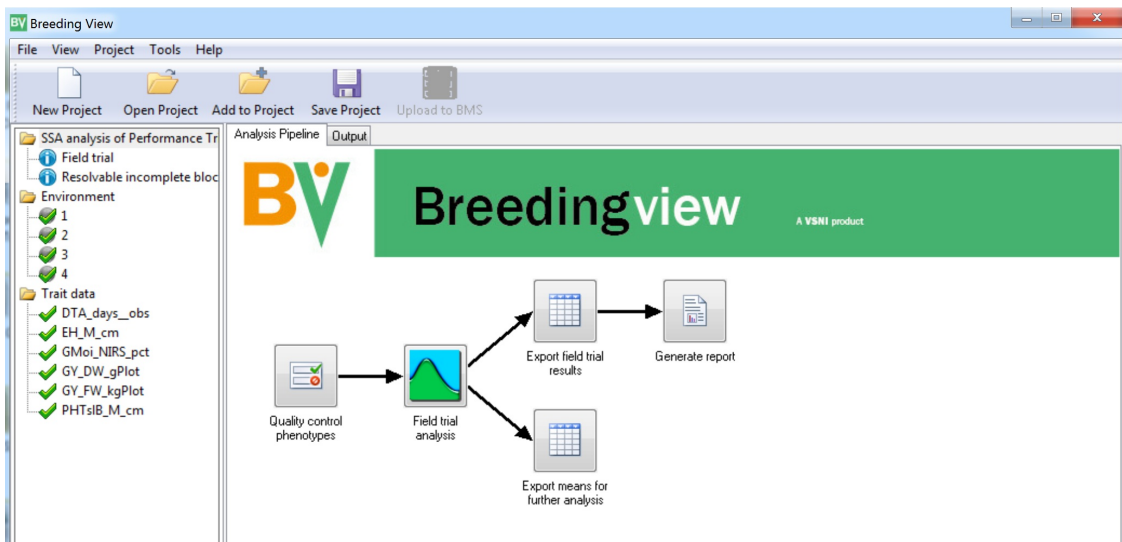
Users of the DESKTOP Edition:

Upon downloading the BMS for the first time, you get a free trial license by [requesting one here](#). After the trial period, or if you are a returning user, you may [request a license renewal here](#) (at a fee in some cases, depending on your situation).

- Enter your license code and select Activate.



Breeding View is now activated and analyses can be preformed.



Related

- [Single Site Analysis](#)
- [Multi-Site Analysis](#)