

Browse Studies

BMS 13.0-14.0 Manual

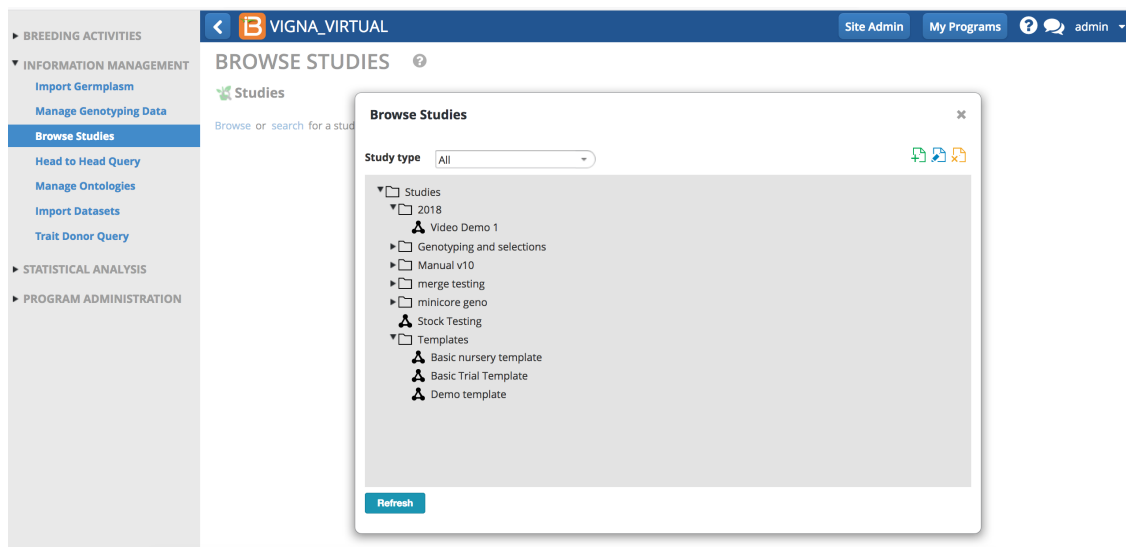
[About](#)
[Browse](#)
[Search](#)
[Review](#)
[Environment Dataset](#)
[Graphical Filtering - BETA](#)
[Means Dataset](#)
[Plot Dataset](#)
[Related](#)

About

Browse studies provides a consolidated view of completed studies, including environmental means data. Browse studies also offers a graphical filtering tool to assist selections.

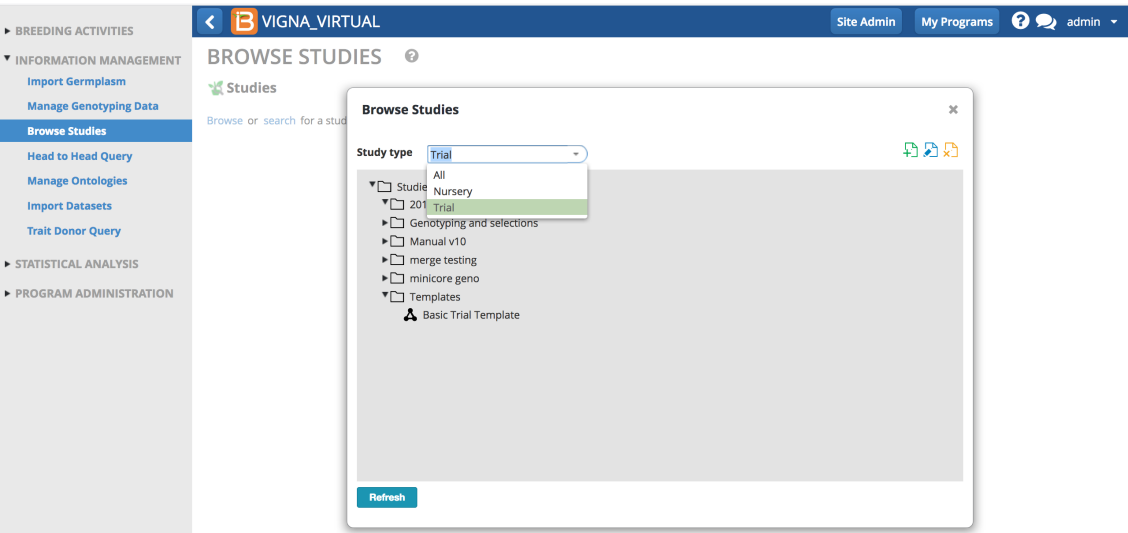
Browse

- Browse directory to select studies from the file directory. The browse studies file directory is the only directory where study names can be edited by selecting the pen icon.

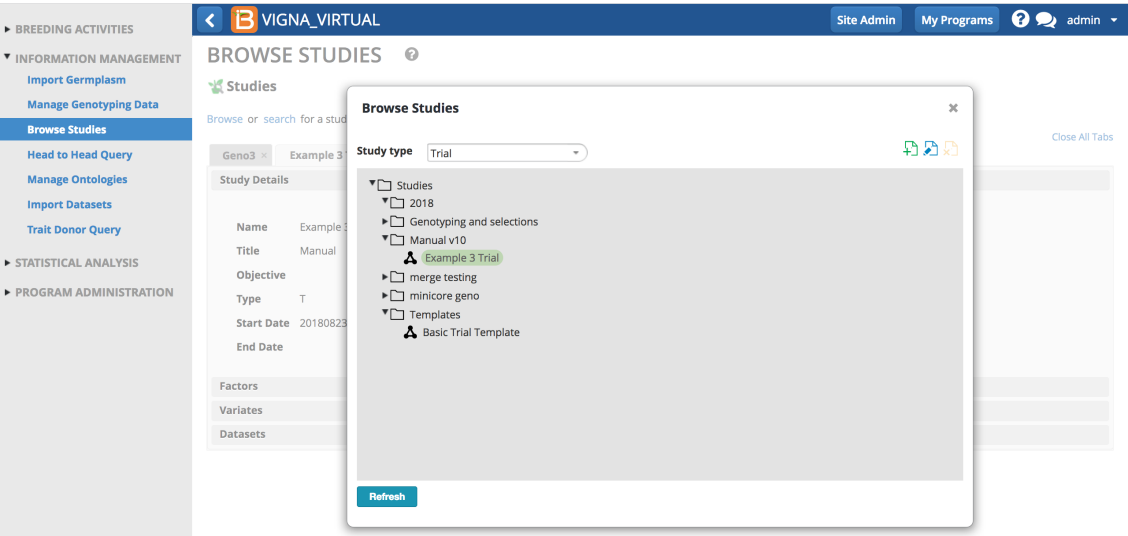


The screenshot displays the VIGNA_VIRTUAL application interface. On the left is a sidebar menu with categories: BREEDING ACTIVITIES, INFORMATION MANAGEMENT (containing links like Import Germplasm, Manage Genotyping Data, Browse Studies, Head to Head Query, Manage Ontologies, Import Datasets, and Trait Donor Query), STATISTICAL ANALYSIS, and PROGRAM ADMINISTRATION. The main header shows 'VIGNA_VIRTUAL' with navigation links for Site Admin, My Programs, and a user profile (admin). The main content area is titled 'BROWSE STUDIES' and includes a search bar. A modal window titled 'Browse Studies' is open, featuring a 'Study type' dropdown menu set to 'All'. The modal lists a directory structure: 'Studies' (expanded) contains '2018' (expanded) with 'Video Demo 1', 'Genotyping and selections', 'Manual v10', 'merge testing', and 'minicore geno'; 'Stock Testing'; and 'Templates' (expanded) with 'Basic nursery template', 'Basic Trial Template', and 'Demo template'. A 'Refresh' button is at the bottom of the modal.

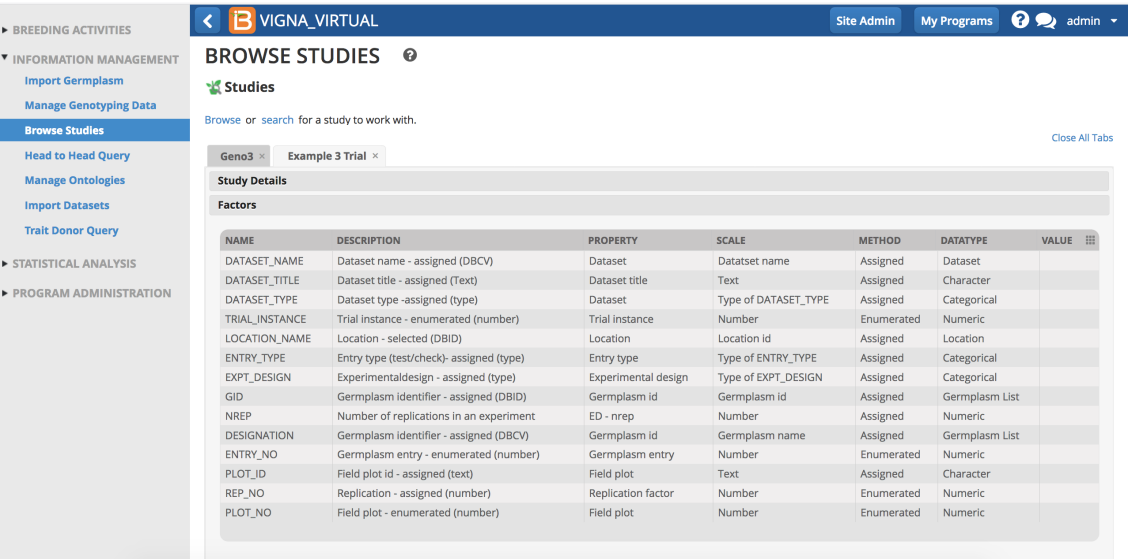
- Filter studies by study type.



- Select study from the file directory. Selected studies will open behind the pop-up directory. Close the pop-up directory to view.



- Close file directory popup window to review study details.



Search

- Use the Search tab to find studies based on date, name, country, and season. Highlight the appropriate search result to open the details behind the popup.

Review

- Select Study Details to review.

BREEDING ACTIVITIES

INFORMATION MANAGEMENT

- Import Germplasm
- Manage Genotyping Data
- Browse Studies**
- Head to Head Query
- Manage Ontologies
- Import Datasets
- Trait Donor Query

STATISTICAL ANALYSIS

PROGRAM ADMINISTRATION

RICE AND SHINE

Site AdminMy Programs?admin

BROWSE STUDIES

Studies

Browse or search for a study to work with.

Trial 00015

Study Details

Name

Trial 00015

Title

study imported

Objective

Type

T

Start Date

20180423

End Date

Factors

Variates

Datasets

- Select Factors to review.

BREEDING ACTIVITIES

INFORMATION MANAGEMENT

- Import Germplasm
- Manage Genotyping Data
- Browse Studies**
- Head to Head Query
- Manage Ontologies
- Import Datasets
- Trait Donor Query

STATISTICAL ANALYSIS

PROGRAM ADMINISTRATION

RICE AND SHINE

Site AdminMy Programs?admin

BROWSE STUDIES

Studies

Browse or search for a study to work with.

Trial 00015

Study Details

Factors

NAME	DESCRIPTION	PROPERTY	SCALE	METHOD	DATATYPE	VALUE
DATASET_NAME	Dataset name - assigned (DBCv)	Dataset	Datset name	Assigned	Dataset	
Trial 00015-MEANS	Dataset name - assigned (DBCv)	Dataset	Datset name	Assigned	Dataset	
DATASET_TITLE	Dataset title - assigned (Text)	Dataset title	Text	Assigned	Character	
DATASET_TYPE	Dataset type -assigned (type)	Dataset	Type of DATASET_TYPE	Assigned	Categorical	
TRIAL_INSTANCE	Trial instance - enumerated (number)	Trial instance	Number	Enumerated	Numeric	
LOCATION_NAME	Location - selected (DBID)	Location	Location id	Assigned	Location	
ENTRY_NO	Germplasm entry - enumerated (number)	Germplasm entry	Number	Enumerated	Numeric	
GID	Germplasm identifier - assigned (DBID)	Germplasm id	Germplasm id	Assigned	Germplasm List	
DESIGNATION	Germplasm identifier - assigned (DBCv)	Germplasm id	Germplasm name	Assigned	Germplasm List	
PLOT_NO	Field plot - enumerated (number)	Field plot	Number	Enumerated	Numeric	
PLOT_ID	Field plot id - assigned (text)	Field plot	Text	Assigned	Character	
REP_NO	Replication - assigned (number)	Replication factor	Number	Enumerated	Numeric	
BLOCK_NO	Block - assigned (number)	Blocking factor	Number	Enumerated	Numeric	

- Select Variates to review.

BREEDING ACTIVITIES

INFORMATION MANAGEMENT

- Import Germplasm
- Manage Genotyping Data
- Browse Studies**
- Head to Head Query
- Manage Ontologies
- Import Datasets
- Trait Donor Query

STATISTICAL ANALYSIS

PROGRAM ADMINISTRATION

RICE AND SHINE

Site AdminMy Programs?admin

BROWSE STUDIES

Studies

Browse or search for a study to work with.

Trial 00015

Study Details

Factors

Variates

NAME	DESCRIPTION	PROPERTY
AmyCt_Meas_Pct_Mean	Amylose content -BY- Amylose content -IN- Percent	Amylose content
BLAST_Mean	BLAST	Leaf blast damage
BS_Est_0to9_Mean	Brown spot damage -BY- Brown spot damage estimation -IN- Brown spot damage scale	Brown spot damage
Clk_Cerv_cerv_Mean	Chalkiness of endosperm -BY- Chalkiness Cervitec assessment -IN- Cervitec reading	Chalkiness of endosperm
AmyCt_Meas_Pct_Means	Amylose content -BY- Amylose content -IN- Percent	Amylose content
FLWR_Mean	Number of days from the seed sowing or the seedling transplant date to the anthesis (flowering) stage.	Time to heading
BLAST_Means	BLAST	Leaf blast damage
GrYld_Comp_kgha_Mean	Yield -BY- Yield measurement -IN- kg/ha	Grain yield
BS_Est_0to9_Means	Brown spot damage -BY- Brown spot damage estimation -IN- Brown spot damage scale	Brown spot damage
VG	Plant vigor - Not specified (SES (1-9))	Vigor
HojaBlancaSev_ReproEst_0to9_Mean	Hoja blanca disease -BY- Hoja blanca reproductive disease estimation -IN- Hoja blanca reproductive disease scale	Hoja blanca disease
Clk_Cerv_cerv_Means	Chalkiness of endosperm -BY- Chalkiness Cervitec assessment -IN- Cervitec reading	Chalkiness of endosperm
FLWR	Number of days from the seed sowing or the seedling transplant date to the anthesis (flowering) stage.	Time to heading
LfScald_Est_0to9_Mean	Leaf scald damage -BY- Leaf scald damage estimation -IN- Leaf scald damage scale	Leaf scald damage
FLWR_Means	Number of days from the seed sowing or the seedling transplant date to the anthesis (flowering) stage.	Time to heading

- Select Datasets to review.

BREEDING ACTIVITIES

Manage Germplasm

Manage Nurseries

Manage Trials

INFORMATION MANAGEMENT

Import Germplasm

Manage Genotyping Data

Browse Studies

Head to Head Query

Manage Ontologies

Import Datasets

STATISTICAL ANALYSIS

PROGRAM ADMINISTRATION

RICE AND SHINE

Site AdminMy Programs?admin

Studies

Browse or search for a study to work with.

Close All Tabs

CB 2017 JP x Trial 00015 x

Study Details

Factors

Variates

Datasets

Dataset 10115 -> Trial 00015-ENVIRONMENT
Dataset 10117 -> Trial 00015-MEANS
Dataset 10116 -> Trial 00015-PLOTDATA

Environment Dataset

The environment dataset provides the means of replicates within each environment (trial instance) for all traits measured. These are summary statistics that can be uploaded from the Breeding View [Single Site Analysis](#).

- Select environment dataset.

BREEDING ACTIVITIES

INFORMATION MANAGEMENT

Import Germplasm

Manage Genotyping Data

Browse Studies

Head to Head Query

Manage Ontologies

Import Datasets

Trait Donor Query

STATISTICAL ANALYSIS

PROGRAM ADMINISTRATION

BROWSE STUDIES

Studies

Browse or search for a study to work with.

Trial 00015 x

Study Details

Factors

Variates

Datasets

Dataset 10115 -> Trial 00015-ENVIRONMENT
Dataset 10117 -> Trial 00015-MEANS
Dataset 10116 -> Trial 00015-PLOTDATA

The environment data set offers several options for review and decision making.

- Export selected environmental datasets as .xls file.
- Open in an expanded table view.
- Open in Graphical Filtering Tool.

BREEDING ACTIVITIES

INFORMATION MANAGEMENT

Import Germplasm

Manage Genotyping Data

Browse Studies

Head to Head Query

Manage Ontologies

Import Datasets

Trait Donor Query

STATISTICAL ANALYSIS

PROGRAM ADMINISTRATION

BROWSE STUDIES

Studies

Browse or search for a study to work with.

Trial 00015 x

Study Details

Factors

Variates

Datasets

Dataset of Trial 00015-ENVIRONMENT

TRIAL_INSTANCE	LOCATION_NAME	AMYCT_MEAS_PCT_MEAN	BLAST_MEAN	BS_EST_OT09_MEAN	CLK_CERV_CI
1	Africa Rice Centre	27.544	1.48	1.97333333333333	1.244
2	CENTER FOR INTERNATIONAL FORESTRY RESEARCH	27.575	2.07666666666667		0.87866666666666
3	Centro Internacional de Agricultura Tropical	27.158			0.92133333333333
4	INT CENTER FOR AGRICULTURAL RES IN THE DRY AREAS	24.7516666666667	1.25333333333333	3.52	1.28533333333333
5	INT CENTER FOR RESEARCH IN AGROFORSTRY	28.5912751677852	1.73333333333333		1.42608695652
6	INT CENTER FOR THE IMPROVEMENT OF MAIZE AND WHEAT	27.8408026755853	0.103678929765886	0.204013377926421	1.12040133779
7	INT POTATO CENTER	22.8606666666667	0.866666666666667		1.69866666666666

Observations were preformed at 7 locations in this study.

Graphical Filtering - BETA

Graphical filtering can be used assist selection decisions. This feature is currently available from within a single environment. Expect expanded functionality in future releases. The graphical filtering tool was designed by the CassavaBase group at Cornell University, and is an example of a BMS "plug-and-play" application using open source API calls defined by [BrAPI](#).

- Select environment of interest and Open Graphical Filtering Tool.

BREEDING ACTIVITIES

Manage Germplasm

Manage Nurseries

Manage Trials

INFORMATION MANAGEMENT

Import Germplasm

Manage Genotyping Data

Browse Studies

Head to Head Query

Manage Ontologies

Import Datasets

STATISTICAL ANALYSIS

PROGRAM ADMINISTRATION

RICE AND SHINE

Site AdminMy Programsadmin

Studies

Browse or search for a study to work with.

Trial 00015 x

ractors

Variates

Datasets

Dataset of Trial 00015-ENVIRONMENT

TRIAL_INSTANCE	LOCATION_NAME_ID	LOCATION_NAME	AMYCT_MEAS_PCT_MEAN	BLAST_MEAN	
1	9001	Africa Rice Centre - (WARDA)	27.544	1.48	1.9
2	9007	CENTER FOR INTERNATIONAL FORESTRY RESEARCH - (CIFOR)	27.575	2.0766666666667	
3	9003	Centro Internacional de Agricultura Tropical - (CIAT)	27.158		
4	9006	INT CENTER FOR AGRICULTURAL RES IN THE DRY AREAS - (ICARDA)	24.751666666667	1.2533333333333	3.5
5	9010	INT CENTER FOR RESEARCH IN AGROFORSTRY - (ICRAF)	28.5912751677852	1.7333333333333	
6	9004	INT CENTER FOR THE IMPROVEMENT OF MAIZE AND WHEAT - (CIMMYT)	27.8408026755853	0.103678929765886	0.2
7	9008	INT POTATO CENTER - (CIP)	22.860666666667	0.8666666666667	

Export to Fieldbook Excel FileOpen in Table ViewerOpen Graphical Filtering Tool

The default tabular view (not grouped by accession) displays all of the recorded measurements from the selected environment.

- Select Group by Accession and Load to reveal the mean value for each germplasm entry in this environment.

BREEDING ACTIVITIES

Manage Germplasm

Manage Nurseries

Manage Trials

INFORMATION MANAGEMENT

Import Germplasm

Manage Genotyping Data

Browse Studies

Head to Head Query

Manage Ontologies

Import Datasets

STATISTICAL ANALYSIS

PROGRAM ADMINISTRATION

RICE AND SHINE

Site AdminMy Programsadmin

BrAPI Graphical Filtering

Group By Accession

Load

WHERE

+

Show 10 entries

Search:

Study	Name	Accession	VG	FLWR	PLTHGT	GrYld_Comp_kgha	BLAST	PBDam_Est_0to9	LfScald_Est_0to9
Trial 00015		IR87233-24-23-2-1-M	6	85	96.7	9166.66666666668	1	1	3
Trial 00015		CT19298-{100}-1-2-3-1-4MP	5	96	107.7	6791.66666666667	1	1	1
Trial 00015		CT11891-3-3-3-M-1-5-M	6	83	106.1	4375.000000000001	1	1	2

Showing 1 to 10 of 91 entries

Previous1234

91 germplasm entries were evaluated wil several replications at the CIFOR location. Grouping by accession reveals the means of the traits evaluated fot each germplasm.

- Select the + button and New Range to reveal traits.

BREEDING ACTIVITIES

Manage Germplasm

Manage Nurseries

Manage Trials

INFORMATION MANAGEMENT

Import Germplasm

Manage Genotyping Data

Browse Studies

Head to Head Query

Manage Ontologies

Import Datasets

STATISTICAL ANALYSIS

PROGRAM ADMINISTRATION

RICE AND SHINE

Site AdminMy Programsadmin

BrAPI Graphical Filtering

Group By Accession

Load

WHERE

+

New Range

New Group

Show

Search:

Accession	Count	VG	FLWR	PLTHGT	GrYld_Comp_kgha	BLAST	PBDam_Est_0to9
926	3	4	96.333333333333	134.9	8333.3333333334	2	1
Azukena	3	5.8333333333333	87	104.933333333334	6444.4444444445	2.3333333333333	1
CT11231-2-2-1-3-M-4-2-M	3	6.1666666666667	83	107.5	6219.4444444445	1.6666666666667	2
CT11231-2-2-1-3-M-5-2-M-1-M	3	5.8333333333333	69	109.666666666667	5955.5555555556	2	2.3333333333333
CT11231-2-2-1-3-M-5-2-M-3-M	3	5.6666666666667	76	109.233333333335	4597.2222222223	2.3333333333333	1.3333333333333
CT11231-2-2-1-M-6-5-M-4-M	3	5.6666666666667	72	102.666666666667	6233.3333333333	2.3333333333333	1
CT11891-3-3-3-M-1-5-M	3	5.3333333333333	83	106.066666666666	5777.7777777778	2	1.6666666666667

- Select trait to display in the graphical interface.

BREEDING ACTIVITIES

Manage Germplasm

Manage Nurseries

Manage Trials

INFORMATION MANAGEMENT

Import Germplasm

Manage Genotyping Data

Browse Studies

Head to Head Query

Manage Ontologies

Import Datasets

STATISTICAL ANALYSIS

PROGRAM ADMINISTRATION

RICE AND SHINE

Site Admin My Programs ? admin

BrAPI Graphical Filtering

Group By Accession Load

WHERE

Select a Trait...

VG

FLWR

PLTHGT

GrYld_Comp_kgha

BLAST

PBDam_Est_Oto9

LfScald_Est_Oto9

AmyCt_Meas_Pct

Clk_Cerv_cerv

ZnCT_Meas_ppm

New Range

New Group

Show

Accession

Unit Count

VG

FLWR

PLTHGT

GrYld_Comp_kgha

BLAST

PBDam_Est_Oto9

LfScald_Est_Oto9

AmyCt_Meas_Pct

Clk_Cerv_cerv

ZnCT_Meas_ppm

926

Azucena

3

5.833333333333333

87

104.93333333333334

6444.444444444445

2.3333333333333335

1

CT11231-2-2-1-3-M-4-2-M

3

6.166666666666667

83

107.5

6219.444444444445

1.666666666666667

2

CT11231-2-2-1-3-M-5-2-M-1-M

3

5.833333333333333

69

109.66666666666667

5955.555555555556

2

2.3333333333333333

- Right click on the distribution graph to draw a box across the range of values to favor for selection. The list of germplasm below becomes restricted to display only those germplasm who performed in the desired range.

BrAPI Graphical Filtering

GrYld_Comp_kgha

4.1e+3

4.2238k

3/91 selected.

4.5719k

Show

10 entries

Search:

Accession	Unit Count	VG	FLWR	PLTHGT	GrYld_Comp_kgha	BLAST	PBDam_Est_Oto9	LfScald_Est_Oto9	AmyCt_Meas_Pct	Clk_Cerv_cerv	ZnCT_Meas_ppm
PCT11:0:0:3>1044-M-2-3-M-1-M	3	6.166666666666667	69	99.100000000000001	4569.444444444445	1.666666666666667	1	1.666666666666667	26.966		
PCT4:0:0:1>295-2-6-1-3-2-M	3	6.333333333333333	83	106.7	4555.555555555556	1.666666666666667	1.666666666666667	1.3333333333333333	27.033		
PCT4:SA:1:1,Bo:3>204-1-3-6-M-3-M	3	5.666666666666667	70	99.400000000000002	4486.111111111112	2	1.3333333333333333	2.3333333333333335	26.833		

Showing 1 to 3 of 3 entries (filtered from 91 total entries)

Previous 1 Next

Three germplasm evaluated at the CIFOR location had mean yield measurements between 4223.8-4571.9 kilograms per hectare.

- Use the + button to add additional trait filters with the following qualifiers:
 - And
 - And Not
 - Or

BREEDING ACTIVITIES

Manage Germplasm

Manage Nurseries

Manage Trials

INFORMATION MANAGEMENT

Import Germplasm

Manage Genotyping Data

Browse Studies

Head to Head Query

Manage Ontologies

Import Datasets

STATISTICAL ANALYSIS

PROGRAM ADMINISTRATION

RICE AND SHINE

Site Admin My Programs ? admin

BrAPI Graphical Filtering

WHERE

GrYld_Comp_kgha

5.7e+3

4.1829k

2/13 selected.

6.7217k

ZnCT_Meas_ppm

18

18.046

2/42 selected.

21.163

AND

LfScald_Est_Oto9

1.3

2.0905

4/6 deselected.

2.3333

AND NOT

PROGRAM ADMINISTRATION


Show 10 entries

Search:

Accession	Unit Count	VG	FLWR	PLTHGT	GrYld_Comp_kgha	BLAST	PBDam
PCT11:Bo:4:2>125-1-4-M	3	5.5	76	105.73333333333335	6041.666666666667	1.3333333333333333	1.3333333333333333
PCT4:SA:1:1,Bo:3>204-1-3-3-M-2-M	3	5.666666666666667	69.66666666666667	97.56666666666668	5736.111111111112	1.3333333333333333	1.3333333333333333

Showing 1 to 2 of 2 entries (filtered from 91 total entries)

Previous1Next



Two germplasm evaluated at the CIFOR location had mean grain yields a zinc levels high enough and leaf scald scores low enough to meet the filtering criteria.

Means Dataset

If single site analyses have been preformed for a study and the summary statistics loaded (see more[Upload Summary Stats to BMS](#)), the means data is available for review and export from Browse Studies.

- Select Means Dataset.

BREEDING ACTIVITIES

Manage Germplasm

Manage Nurseries

Manage Trials

INFORMATION MANAGEMENT

Import Germplasm

Manage Genotyping Data

Browse Studies

Head to Head Query

Manage Ontologies

Import Datasets

STATISTICAL ANALYSIS

RICE AND SHINE

Site AdminMy Programs?admin

Studies

Browse or search for a study to work with.

Trial 00015

Study Details

Factors

Variates

Datasets

Dataset 10115 -> Trial 00015-ENVIRONMENT

Dataset 10117 -> Trial 00015-MEANS

Dataset 10116 -> Trial 00015-PLOTDATA

The means data set offers several options for review and export.

- Export the means data for all environments as an .xls file.
- Open in an expanded table view.
- Open in Graphical Filtering Tool by selecting one entry of an instance of interest

BREEDING ACTIVITIES

Manage Germplasm

Manage Nurseries

Manage Trials

INFORMATION MANAGEMENT

Import Germplasm

Manage Genotyping Data

Browse Studies

Head to Head Query

Manage Ontologies

Import Datasets

STATISTICAL ANALYSIS

PROGRAM ADMINISTRATION

Manage Program Settings

About the BMS

RICE AND SHINE

Site AdminMy Programs?admin

Studies

Browse or search for a study to work with.

Trial 00015

Factors

Variates

Datasets

Dataset of Trial 00015-MEANS

TRIAL_INSTANCE	ENTRY_NO	GID	DESIGNATION	PLOT_ID	AMYCT_MEAS_PCT_MEANS	BLAST_MEANS	BS_EST_OT09_MEANS
1	1	2919	CT19298-(100)-1-2-3-1-4-MP	85VZP8smVeZQr	32.2	1	0.9999999999999999
1	2	2920	926	85VZPIsPrwnT	32.13333333333333	1	2.333333333333333
1	3	2921	CT19561-3-1-1P-2-4-2-M	85VZP91LDYlZ	31.83333333333334	2.333333333333333	1.666666666666667
1	4	2922	PCT4:SA:2:1,Bo:4>119-1-2-M	85VZPrrRDMDal	32.16666666666667	1	1.666666666666667
1	5	2923	PCT4:0:0:3>138-1-4-M	85VZPzdUfhSxX	26.16666666666667	1	0.9999999999999999
1	6	2924	PCT11:Bo:4:2>125-1-4-M	85VZP0IDCb0Jz	24.43333333333333	1	3
1	7	2925	PCT4:0:0:3>220-1-6-M	85VZPdq0f9xOv	26.6	1	1.666666666666667
1	8	2926	PCT11:Bo:4:2>128-1-2-2-1-M	85VZPXcGdUzwj	28.06666666666667	1.666666666666667	1.666666666666667
1	9	2927	PCT11:Bo:4:2>28-1-1-4-1-M	85VZPE9PAstv4	26.76666666666667	1	1.666666666666667
1	10	2928	PCT4:SA:2:1,Bo:4>205-1-4-M	85VZPhvFw6CX5	28.23333333333333	1	0.9999999999999999
1	11	2929	PCT4:SA:2:1,Bo:4>188-1-1-M	85VZPGKzCTUpb	25.56666666666667	2.333333333333336	2.333333333333326
1	12	2930	PCT4:SA:8:1>9-1-4-M	85VZP633TJK3e	21.36666666666667	1	0.9999999999999999
1	13	2931	PCT4:0:0:3>233-1-4-M	85VZP1XKTRAb	26.16666666666667	1	0.9999999999999999
1	14	2932	PCT4:SA:2:1,Bo:4>312-1-4-M	85VZPWjhHRvNv	28.16666666666667	2.333333333333333	1.666666666666667
1	15	2933	PCT11:Bo:4:2>23-1-1-M	85VZPEmZBLdt	26.46666666666667	1	1

Export to Fieldbook Excel FileOpen in Table ViewerOpen Graphical Filtering Tool

Plot Dataset

The plot dataset contains all the factors, variates, and observations for each plot.

- Select PLOTDATA.

BREEDING ACTIVITIES

Manage Germplasm

Manage Nurseries

Manage Trials

INFORMATION MANAGEMENT

Import Germplasm

Manage Genotyping Data

Browse Studies

Head to Head Query

Manage Ontologies

Import Datasets

B

RICE AND SHINE

Site AdminMy Programs?admin

Browse or search for a study to work with.

Trial 00015

Study Details

Factors

Variates

Datasets

Dataset 10115 -> Trial 00015-ENVIRONMENT

Dataset 10117 -> Trial 00015-MEANS

Dataset 10116 -> Trial 00015-PLOTDATA

- The plot data set offers several options for review and export.
 - Export the entire plot datasets as an .xls file.
 - Open in an expanded table view.
 - Open in Graphical Filtering Tool by selecting one entry of an instance of interest

BREEDING ACTIVITIES

Manage Germplasm

Manage Nurseries

Manage Trials

INFORMATION MANAGEMENT

Import Germplasm

Manage Genotyping Data

Browse Studies

Head to Head Query

Manage Ontologies

Import Datasets

STATISTICAL ANALYSIS

PROGRAM ADMINISTRATION

B

RICE AND SHINE

Site AdminMy Programs?admin

Browse or search for a study to work with.

Trial 00015

Variates

Datasets

Dataset of Trial 00015-MEANS

Dataset of Trial 00015-PLOTDATA

TRIAL_INSTANCE	ENTRY_NO	GID	DESIGNATION	PLOT_NO	REP_NO	BLOCK_NO	PLOT_ID	VG	FLWR	PLTHGT	
1	11	2929	PCT4-SA:2:1,Bo:4>188-1-1-M	1	1	1	8SVZPvxMRn2jK	7	88	126	⋮
1	28	2946	IR87233-19-4-2-2-M	2	1	1	8SVZP5H0ooAHI	7	92	90.3	⋮
1	71	2989	CT11891-3-3-3-M-1-5-M	3	1	1	8SVZPUOIY11UD	7	78	88	⋮
1	9	2927	PCT11:Bo:4>28-1-1-4-1-M	4	1	1	8SVZP4ZKOtv1l	5	79	102	⋮
1	68	2986	PCT11:Bo:2>125-M-3-2-3-1-M	5	1	1	8SVZPBvYoYe7zw	3	66	92	⋮
1	42	2960	PCT4:0:0:1>295-2-3-1-3-3-M	6	1	1	8SVZPWw9Hpqx6	3	60	84	⋮
1	55	2973	PCT4:0:0:1>295-2-1-1-3-2-M	7	1	1	8SVZPEEnRYnzl	3	60	85	⋮
1	91	3009	IR64	8	1	1	8SVZPHuE1qY4Y	3	97	89	⋮
1	60	2978	PCT11:Bo:2>487-3-1-3-2-3-M	9	1	1	8SVZPT3du8GAT	1	73	77	⋮
1	63	2981	CT11231-2-2-1-3-M-5-2-M-3-M	10	1	1	8SVZPFlxZ8I9l	1	60	95	⋮
1	47	2965	PCT4:0:0:1>295-2-6-3-3-1-M	11	1	2	8SVZPH4xZOzNc	3	58	77	⋮
1	3	2921	CT19561-3-1-1-P-2-4-2-M	12	1	2	8SVZPcG0zQqIR	3	95	91	⋮
1	58	2976	PCT4-SA:1:1,Bo:3>204-1-3-6-M-3-M	13	1	2	8SVZPWZROQvssy	3	55	79	⋮
1	20	2938	IR87233-135-2-3-3-M	14	1	2	8SVZPTIMPu93x	3	95	79	⋮
1	74	2992	PCT4-SA:1:1,SA:2>746-1-2-2-1-4-M	15	1	2	8SVZPip1SOTb2	3	66	80	⋮

Export to Fieldbook Excel FileOpen In Table ViewerOpen Graphical Filtering Tool

Related

- [File Directories](#)
- [Manage Studies](#)